



TAU3

True Three Phase Transformer Analyzer

USER MANUAL

EN - ENGLISH

Notice

The information presented in this manual is adequate for the intended use of the product. Use of the product or its individual instruments for purposes other than those specified herein requires confirmation of their validity and suitability from Megger. Refer to the warranty information below. Specifications are subject to change without notice.

WARRANTY

Products supplied by Megger are warranted against defects in material and workmanship for a period of 1 years following shipment. The warranty is void in the event of abuse (failure to follow recommended operating procedures) or failure by the customer to perform specific maintenance as indicated in this manual.

Megger

400 Opportunity Way

Phoenixville, PA 19460

610-676-8500 (Telephone)

610-676-8610 (Fax)

www.megger.com

Contents

Notice	2
Table of Contents.....	3
Introduction.....	5
Item received	6
Warnings and safety precautions	13
Technical specifications	15
Connections and controls	18
PC software installation	19
PC software update	22
PowerDB installation.....	24
Initialization.....	25
About	26
Settings.....	27
Measurements & Limits Settings.....	28
Nameplate	29
Turns Ratio.....	30
Resistance	31
Efficiency.....	32
Regional.....	33
OLTC Control	34
Display.....	35
Administrative & Maintenance.....	36

Table of Contents

Quick Test.....	37
Confirm Vector.....	38
Vector, Phases, and Nameplate.....	39
Select Vector and Select Phases to Test.....	40
Nameplate.....	41
Turns Ratio & Balance	42
Winding Resistance & Demagnetization.....	45
Short Circuit Impedance	48
Efficiency.....	50
All tests.....	51
Save, Print, Export, Retest, Home, Test Setup	52
Results	53
Asset Template	55
Template Test	58
Single tab test	61
Multiple Tap OLTC AC Tests.....	62
Multiple Tap OLTC Winding Resistance Tests.....	63
Multiple Tap OLTC All Tests	65
PowerDB Import	66
Service	67
Maintenance	68

Introduction

Thank you for your purchase of the Megger TAU3 True Three Phase Transformer Analyzer. The TAU3 design emphasizes safety, reliability, and ease of use. It will provide you with the information you need to test power, distribution, and instrument transformers and make informed electromechanical maintenance decisions

Purpose of this manual

This document is the user manual for the Megger TAU3 True Three Phase Transformer Analyzer. It provides a description of the instrument as well as operating instructions. Read this manual before using the equipment, with special emphasis on all safety discussions.

Audience

This manual is for technical personnel who are familiar with the various transformer measurements performed by electrical test equipment and have a general understanding of their use and operation. Such personnel should also be thoroughly familiar with the hazards associated with the use of this equipment and should have received proper safety training.

If you find any discrepancies in the TAU3 manual or have any comments, please send them to Megger via fax, e-mail, or phone.


Megger
400 Opportunity Way
Phoenixville, PA 19460

610-676-8500 (Telephone)
610-676-8610 (Fax)
USTechSupportGrp@megger.com

For technical support, please consult the Megger web site at www.megger.com for the local distributor near you.

Item received

TAU3 Models

Part Number	Description	Image
TAU3-BASIC	62.5 VAC / 10 ADC three phase switched multifunction turns ratiometer and winding resistance ohmmeter test set	
TAU3-ADV	125 VAC / 16 ADC true three phase multifunction turns ratiometer, winding resistance ohmmeter, and short circuit impedance/leakage reactance test set	
TAU3-PRO	250 VAC / 32 ADC true three phase multifunction turns ratiometer, winding resistance ohmmeter, and short circuit impedance/leakage reactance test set	
TAU3-EXP	250 VAC / 32 ADC true three phase multifunction turns ratiometer, winding resistance ohmmeter, and short circuit impedance/leakage reactance test set with select optional hardware and software accessories included	



Model Differentiation	TAU3-BASIC	TAU3-ADV	TAU3-PRO	TAU3-EXP
Integrated display	10.1" Included			
Confirm Vector	Included			
Winding Resistance Maximum Excitation Voltage - DC	50 V		100 V	
TTR Maximum Current - AC	3.5 A		11 A	
TTR Max Induced Voltage - AC	62.5 V	125 V	250 V	
Winding Resistance Maximum Current- DC	10 A	16 A	32 A	
True 3 Phase Excitation and Measurement	N/A	Included		
Phase Shifting Tx's Measurement		Included		
Short Circuit Impedance / Leakage Reactance		Included		
FRSL		Optional		Included
PowerDB Control	Optional			Included

TAU3-BASIC and TAU3-ADV Leads

Part Number	Description	Image
2008-15KIT2	16 A H & X leads. 5 m (15 ft)	
2008-30KIT2	16 A H & X leads. 9 m (15 ft)	
2008-60KIT2	16 A H & X leads. 18 m (15 ft)	
2008-100KIT2	16 A H & X leads. 30 m (100 ft) H leads and 18 m (60 ft) X leads	
2008-30XKIT2	16 A H & X lead extensions. 9 m (30 ft)	

Item received

Part Number	Description	Image
2008-15KIT3	16 A H & 32 A X leads. 5 m (15 ft)	
2008-30KIT3	16 A H & 32 A X leads. 9 m (15 ft)	
2008-60KIT3	16 A H & 32 A X leads. 18 m (15 ft)	
2008-100KIT3	16 A H & 32 A X leads. 30 m (100 ft) H leads and 18 m (60 ft) X leads.	
2008-30XKIT3	16 A H & 32 A X lead extensions. 9 m (30 ft)	

Part Number	Description	Image
1014-927	AC Power Cords	
CA-USB	USB 2.0 Cable	
1011-622	OLTC Tap Changer Cable	
2012-180	Cable Bag – Back Pack (qty 2)	
4702-7	Ground Lead	

Item received

Part Number	Description	Image
90012-878	Blank Thumb Drive	

Optional software accessories

Part Number	Description
SW-POWERDB	PowerDB Control
SW-CUSTOMAPP	Custom application control
SW-EFFICIENCY	Transformer load, no-load, and efficiency measurements
SW-FRSL	Frequency response stray losses
SW-DRM	Dynamic resistance measurements
SW-DRYOUT	Transformer dry out / winding temperature measurements
SW-HEATRUN	Transformer heat run / cool down measurements

Optional hardware accessories

Part Number	Description	Image
TAU3-CAL-CERT	TAU3 Calibration Certificate	
1004-639	Safety Beacon – 18 m (60 ft)	
1014-928	Transit Case (for instrument)	

90029-537	USB Printer	
90029-573-P	USB Printer Paper (48 rolls)	
2005-249	1:1 Test Jig	
1011-622-A	OLTC tap changer cable adapters	
TRS1PLUS	TRS1+ turns ratio calibration standard	
TOS1	TOS1 resistance calibration standard	

Item received

ORDERING INFORMATION

Item (Qty)	Cat. No.	Item (Qty)	Cat. No.
TAU3 BASIC and ADV lead sets		Frequency response stray losses measurements	SW-FRSL
16 Amp H leads with red jacket and red, yellow, blue, and white clamps (4 total)		Dynamic resistance measurements*	SW-DRM
16 Amp X leads with black jacket and red, yellow, blue, and white clamps (4 total)		Transformer dry out measurements*	SW-DRYOUT
5 m (15 ft) H and X leads	2008-15KIT2	Transformer heat run measurements*	SW-HEATRUN
9 m (30 ft) H and X leads	2008-30KIT2	Item (Qty) For Price List	
18 m (60 ft) H and X leads	2008-60KIT2	Cat. No.	
30 m (100 ft) H and 18 m (60 ft) X leads	2008-100KIT2	TAU3 PRO and EXP lead sets	
Optional Lead Accessories		16 Amp H leads with red jacket and red, yellow, blue, and white clamps (4 total)	
TAU3 BASIC and ADV 16 A H and 16 A X lead extensions		32 Amp X leads with black and white stripe jacket and red, yellow, blue, and white clamps (4 total)	
9 m (30 ft) H and X extensions	2008-30XKIT2	5 m (15 ft) H and X leads	2008-15KIT3
Included Accessories - BASIC, ADV, PRO, EXP		9 m (30 ft) H and X leads	2008-30KIT3
AC Power Cords (US, EU, UK)	1014-927	18 m (60 ft) H and X leads	2008-60KIT3
USB 2.0 Cable	CA-USB	30 m (100 ft) H and 18 m (60 ft) X leads	2008-100KIT3
OLTC Tap Changer Cable	1011-622	Optional Lead Accessories	
Cable Bag – Backpack	2012-180	TAU3 PRO and TAU3 EXP 16 A H and 32 A X lead extensions	
Ground Lead 4.5m (15 ft)	4702-7	9 m (30 ft) H and X extensions	2008-30XKIT3
Thumb Drive	90012-878	Optional Hardware Accessories	
Included accessories - EXP		Calibration Certification	TAU3-CAL-CERT
Second Cable Bag - Backpack	2012-180	Safety Beacon – 18 m (60 ft)	1004-639
OLTC Tap changer cable adapters	1011-622-A	Transit case (for instrument)	1014-928
USB printer	90029-573	USB Printer	90029-573
Safety beacon - 18 m (60 ft)	1004-639	USB Printer Paper (x48 rolls)	90029-573-P
Included accessories - PRO		1:1 Test Jig	2005-249
Second Cable Bag - Backpack	2012-180	OLTC Tap changer cable adapters	1011-622-A
Optional Software Accessories		Motor current monitor*	1014-929
PowerDB control	SW-POWERDB	Vibration monitor*	1014-930
Custom application control	SW-CUSTOMAPP	Temperature probe kit*	1014-931
Transformer efficiency measurements*	SW-EFFICIENCY	TRS1+ Calibration Standard	TRS1PLUS
		TOS1 Calibration Standard	TOS1

Warnings and safety precautions

Safety

Warnings and safety precautions



WARNING!

Death, serious injury, or fire hazard could result from improper use of this instrument. Read and understand this manual before installing this instrument.

Usage of this instrument must comply with the National Electric Code and any additional safety requirements applicable to your country and company policies.

Qualified personnel **MUST** perform operation and maintenance of this instrument. The National Electrical Code defines a qualified person as one familiar with the construction and operation of the equipment and the hazards involved.

Safety Precautions

Take the following safety precautions whenever the instrument is used:

- **Wear safety glasses and insulated gloves when making circuit connections**
- **Hands, shoes, floor/ground must be dry when making any connection to a powered line**

These warnings and safety precautions are to be used where appropriate when following instructions in this manual.



CAUTION!

The equipment could be impaired from improper use not specified in this user guide. Read the complete manual before use.



CAUTION!

Do not use detachable mains supply cords with inadequate electrical ratings.



GENERAL SAFETY PRECAUTIONS



The TAU3 and the Unit Under Test (UUT) should both be considered as sources of instantaneously lethal levels of electrical energy. Observe the following safety precautions

SAFETY IS THE RESPONSIBILITY OF THE USER

Only qualified and trained operators should operate the TAU3. Operator must read and understand the Instruction Manual prior to operating the equipment.

- Observe necessary safety precautions on the TAU3.
- Identify areas of immediate hazard that could result in injury or death.
- Treat all terminals of high-voltage power equipment systems as potential electric shock hazards.
- Use all practical safety precautions to prevent contact with energized parts of the equipment and related circuits.
- Never connect the test set to energized equipment.
- The ground connection must be the first made and the last removed. Any interruption of the grounding connection can create an electrical shock hazard.
- Always disconnect leads from UUT before disconnecting them at the test set.

Max Technical Specifications

Specifications - Valid from -20 ° to +50 °C

Input power

100-240 V AC, 47-63 Hz, 1200 W
±10% Mains supply voltage fluctuations Overvoltage category II

Output power

Voltage	3-phase, 1-100 V
Frequency	DC, 40-480 Hz
Current	0.1 mA – 1 A @ 100 V
Current	0.1 mA – 32 A @ 24 V

Regulatory

Safety	IEC 61010-1:2010 + AMD1:2016
EMI/EMC	IEC 61326-1:2012
RoHS2	EN50581
Vibe/Shock	MIL-STD-810G
Ingress protection	IP65 (Lid closed)

Transformer testing standards

IEEE	C57.152-2013
IEC	60076-1:2011
AS/NZS	6076 1:2014
CIGRE	445 2 011
GOST	3484.1-88

Dimensions 55.8 x 28.7 x 19 cm
22 x 11.3 x 7.5 in

Weight 17 kg 38 lbs

Case

Rugged case with built in wheels and handle
Backpack lead bag for leads and accessories

Internal/external data storage

Up to 10 000 sets of three-phase results internal storage
Transferable via USB 2.0 drive

Communication/control software

USB Interface for PC Control with custom GUI

Touch screen (optional)

25.6 cm	10.1 in
1024 x 600 Resolution	
1000 NITS	

Printer (optional)

51 mm (2 in) thermal printer
Prints all measurement data displayed on GUI

Environmental

Operating	-20 ° to 50 °C (-4 ° to 122 °F)
Storage	-30 ° to 70 °C (-22 ° to 158 °F)
Relative Humidity 0-90 %, non-condensing	
Indoor and outdoor use in dry locations	
Elevation 2000 m MAX	
Pollution degree 2	

TTR

Turns ratio measurement methods

3-phase step up
3-phase step down
1 phase step up
1 phase step down

Turns Ratio Range and Accuracy

Step Down Excitation	25-100 V	±0.05 % 0.8 – 1000
		±0.10 % 1001 – 2000
		±0.30 % 2001 – 15000
		±0.60 % 15001 – 50000
	1-24 V	
		±0.10 % 0.8 – 1000
		±0.20 % 1001 – 2000
		±0.60 % 2001 – 15000

Step Up measurement

25-250 V	±0.05 % 0.8 – 200 (most Power Tx)
1-24 V	±0.10 % 0.8 – 200

Excitation current resolution

Resolution	0.1 mA, 0.1 mA – 100 mA
	1.0 mA, 101 mA – 11 A

Excitation current accuracy

±1 % Reading, ±0.1 mA

Frequency accuracy ±1 % Reading, ±0.1 Hz

Phase range Range 0 – 360 °

Phase accuracy ±0.05 °

Max voltage output 90 VACpk

Technical specifications

Voltage accuracy Typical ± 0.1 % reading, ± 0.1 mV
Guaranteed ± 0.5 % reading

Specified accuracy for external verification only and does not impact AC tests accuracy (TTR, Magnetic Balance, SCI, FRSL, or Losses)

WR

Resistance measurement methods

- 1 phase wye, delta, zigzag
- 2 phase wye w/neutral
- 3 phase wye w/neutral
- Dual winding excitation

DC Open circuit voltage

Up to 100 V

DC Measurement voltage

Up to 100 V

ADV/PRO/EXP Resistance accuracy

- 1.0 $\mu\Omega$ to 30 k Ω
- ± 0.1 % reading, $\pm 1\mu\Omega$
- 30+ k Ω
- ± 0.5 % reading

BASIC Resistance accuracy

- 1.0 $\mu\Omega$ to 30 k Ω
- ± 0.2 % reading, $\pm 1\mu\Omega$
- 30+ k Ω
- ± 0.5 % reading

Resistance resolution

5 digits

DC voltage accuracy ± 0.05 % reading, ± 0.1 mV

DC current accuracy ± 0.05 % reading, ± 0.1 mA

Current and resistance ranges

Typical with 9 m (30 ft) leads

Current	Min Ω	Max Ω
32 A	1.0 $\mu\Omega$	400 m Ω
16 A	1 m Ω	1.0 Ω
8 A	1.0 Ω	2.0 Ω
1 A	2.0 Ω	20 Ω
100 mA	1.0 Ω	100 k Ω

Dynamic resistance measurement method

- Dynamic voltage
- Dynamic current
- Dynamic resistance

Dynamic Resistance Speed

Speed 20 kHz

SCI FRSL

Impedance measurement methods

1 \emptyset

Frequency range 40 – 480 Hz

Impedance measurement range

0.1 Ω - 700 Ω

Impedance accuracy $\pm 1\%$ reading, ± 0.10 m Ω

Reactance measurement

range 0.1 Ω - 700 Ω

Reactance accuracy ± 1 % reading, ± 0.10 m Ω

Inductance accuracy ± 1 % reading, ± 10 μ H

Power factor range 0.1 % – 100 %

Power factor accuracy

± 5 % reading

AC Current accuracy ± 0.2 % reading, ± 0.1 mA

Efficiency

Core loss measurement

methods Hysteresis losses
 Eddy current losses

Core loss accuracy ± 10 % of actual losses

AC copper losses accuracy at 85 °C

± 10 % of actual losses

DC copper losses accuracy at 85 °C

± 10 % of actual losses

Motor current measurement (optional)

9 V battery power

Measuring range: 3.0 A/30 A

Frequency range: DC to 60 Hz

Resolution: ± 50 mA / ± 100 mA

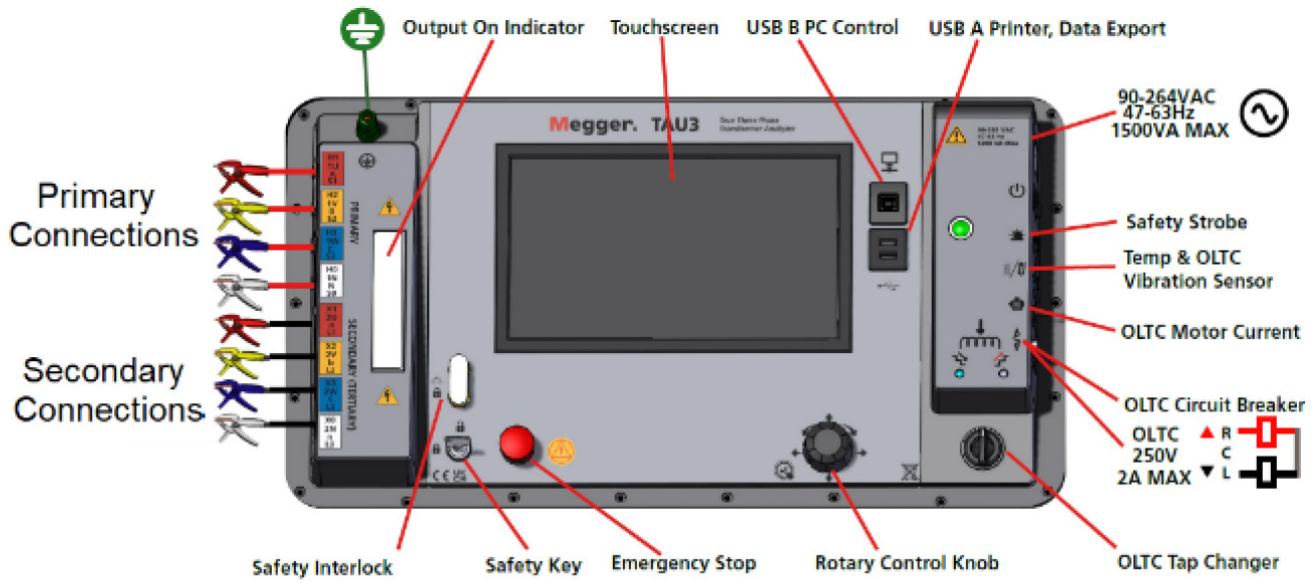
Accuracy: ± 1 % reading

Temperature probe measurement (optional)

Range: -20 °C to 110 °C

Accuracy: ± 1 % reading, ± 1.0 °C

Connections and controls



GENERAL SAFETY PRECAUTIONS

The TAU3 and the Unit Under Test (UUT) should both be considered as sources of instantaneously lethal levels of electrical energy. Observe the following safety precautions

SAFETY IS THE RESPONSIBILITY OF THE USER

Only qualified and trained operators should operate the TAU3. Operator must read and understand the Instruction Manual prior to operating the equipment.

- Observe necessary safety precautions on the TAU3.
- Identify areas of immediate hazard that could result in injury or death.
- Treat all terminals of high-voltage power equipment systems as potential electric shock hazards.
- Use all practical safety precautions to prevent contact with energized parts of the equipment and related circuits.
- Never connect the test set to energized equipment.
- The ground connection must be the first made and the last removed. Any interruption of the grounding connection can create an electrical shock hazard.
- Always disconnect leads from UUT before disconnecting them at the test set.

Megger. TAU3 True Three Phase Transformer Analyzer

Scan QR code for User Guide and additional product info.

CT CONNECTIONS

USE HEAVY GAUGE WIRE >16 AWG (1.28mm)

POWER TRANSFORMER CONNECTIONS

*Neutral connections not required for all transformers

FOR BEST RESULTS UNCOIL LEADS

Quick Start Guide

Select Test

All Tests

TTR & Balance

Resistance & Design

Select Phases

Select Taps

Vector	Tap	Voltage	KVA	Rated I	Z %
Primary	1	10000	25.0	1.4	4.5
Secondary	1	400	25.0	38.1	4.5

Test Settings

Voltage: 250V

Test Mode: Auto

Test Type: Ratio

Start Test

Print

Export

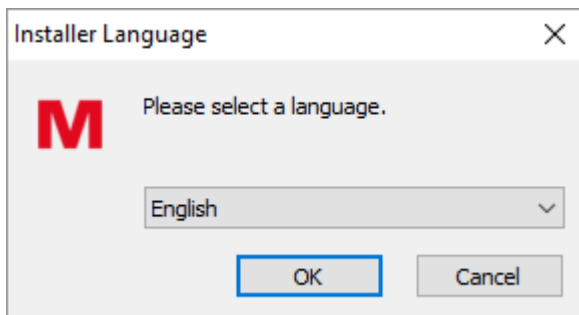
Save

OLTC

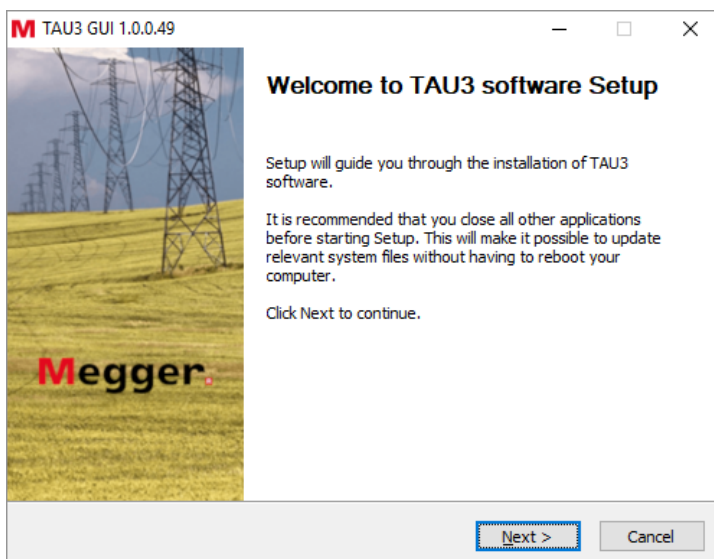
Before installing PC software, contact your IT department. Your IT department can assist with install and provide administrator approval if required.

Control of the TAU3 is possible from the built-in touchscreen or from a USB connected PC with the PC software installed. To install the PC SW:

1. Locate the TAU3 PC software installer
 - a. From the TAU3
 - i. Connect the TAU3 to a PC with the included USB cable
 - ii. Turn on the TAU3
 - iii. After initialization, a CD drive will appear on the PC which contains the software
 - iv. Locate the file named TAU3_installer_X.xxx.exe. X.xxx is the version.
 - b. From the internet
 - i. Go to www.megger.com/TAU3
 - ii. Download the latest PC installer
2. Double click to launch the installer
3. Select a language for the install and click OK.

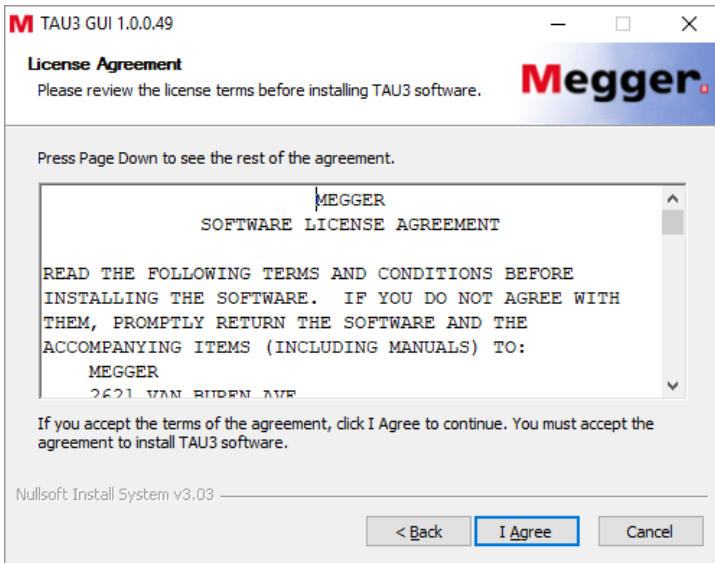


4. Click Next on the welcome screen

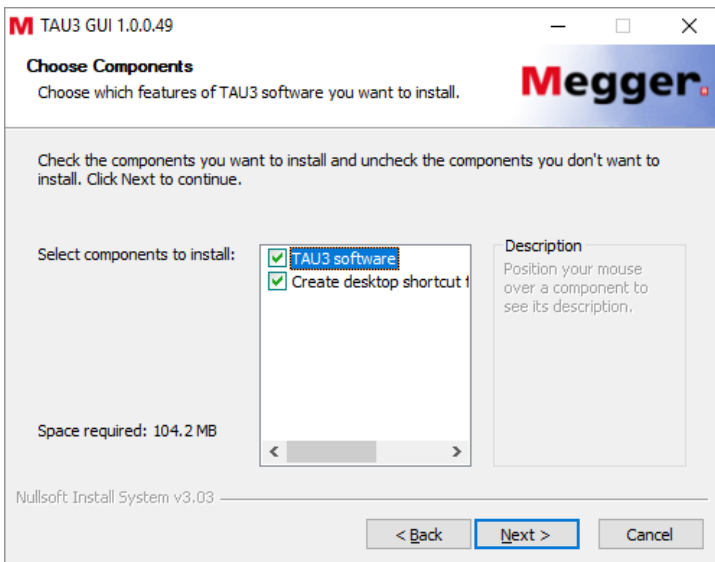


PC software installation

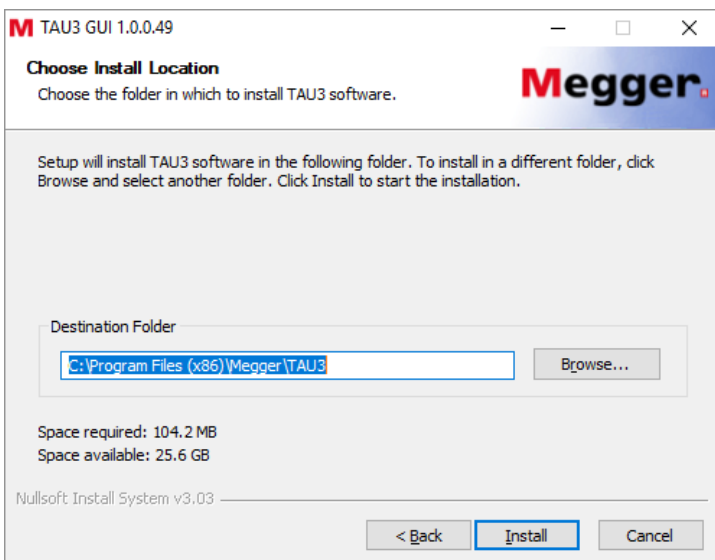
5. Review the license agreement and click I Agree



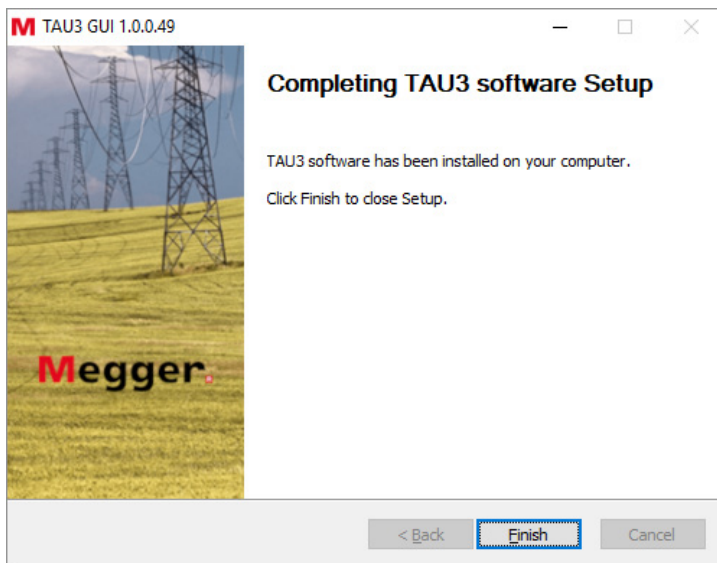
6. Choose components and select Next. Defaults recommended.



7. Select Install Location and click Install. Defaults recommended.



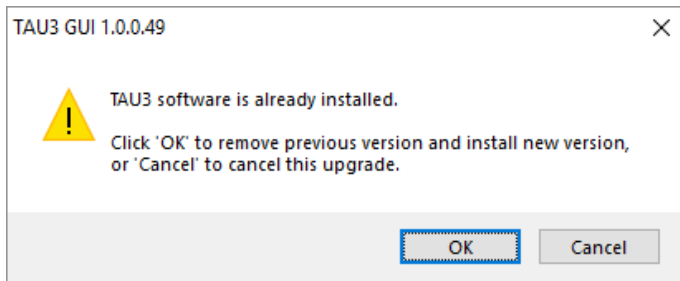
8. Click Finish to complete the install.



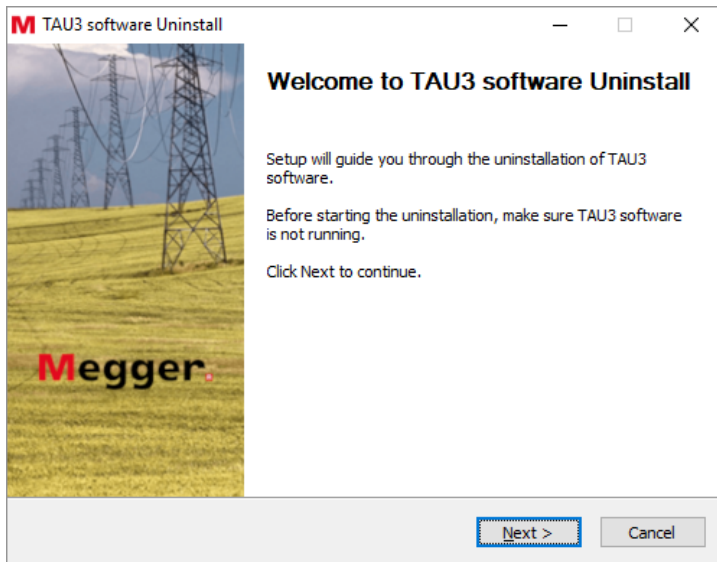
PC software update

When updating to a new version of the TAU3 software, the installer will remove the installed version of software.

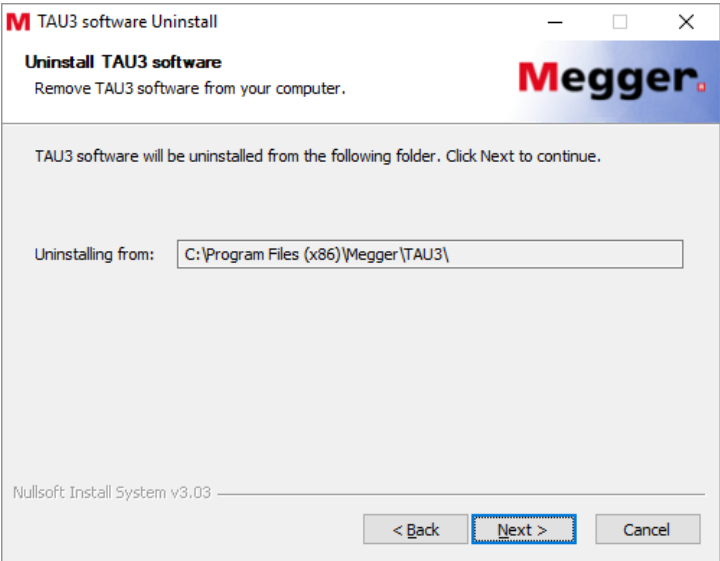
1. Locate the updated TAU3 PC software installer
 - a. From the TAU3
 - i. Connect the TAU3 to a PC with the included USB cable
 - ii. Turn on the TAU3
 - iii. After initialization, a CD drive will appear on the PC which contains the software
 - iv. Locate the file named TAU3_installer_X.xxx.exe. X.xxx is the version.
 - b. From the internet
 - i. Go to www.megger.com/TAU3
 - ii. Download the latest PC installer
2. Double click to launch the installer
3. Click OK to remove the previous TAU3 version



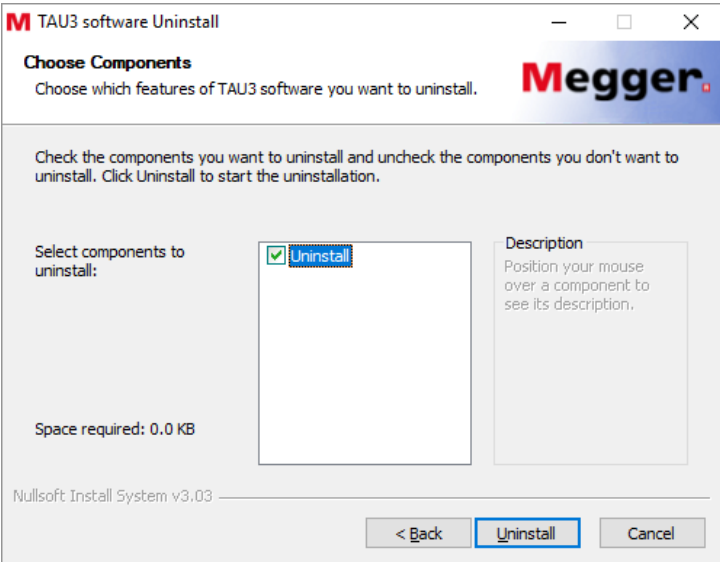
4. Click Next on the welcome screen



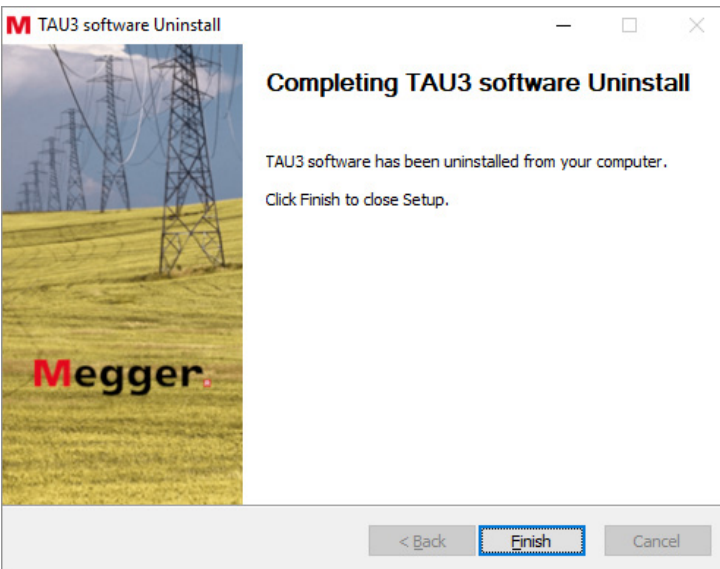
5. Click Next on the uninstall TAU3 software screen



6. Click Uninstall



7. Click Finish



8. Proceed with the installation instructions from PC Software Installation

PowerDB installation

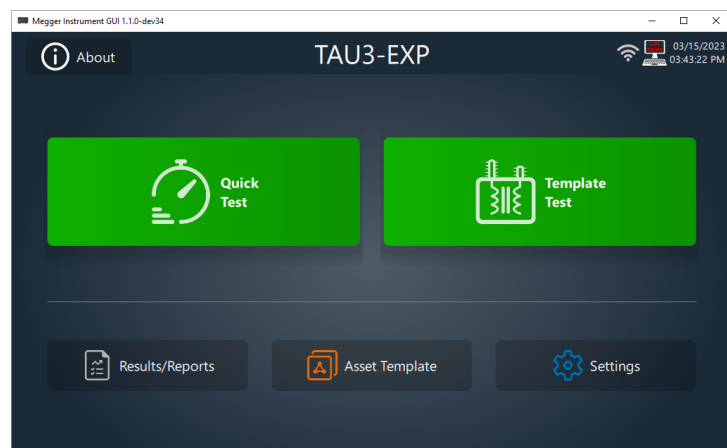
PowerDB Installation

PowerDB can import TAU3 data. In addition, PowerDB can control the TAU3 with the optional SW-POWERDB license. To install PowerDB, download the latest version from www.powerdb.com. Follow the instructions on screen to install PowerDB.

After turning on the TAU3, the Megger logo will display, followed by a progress screen during system initialization.

Home Screen

After the TAU3 has initialized, the display will show the home screen.

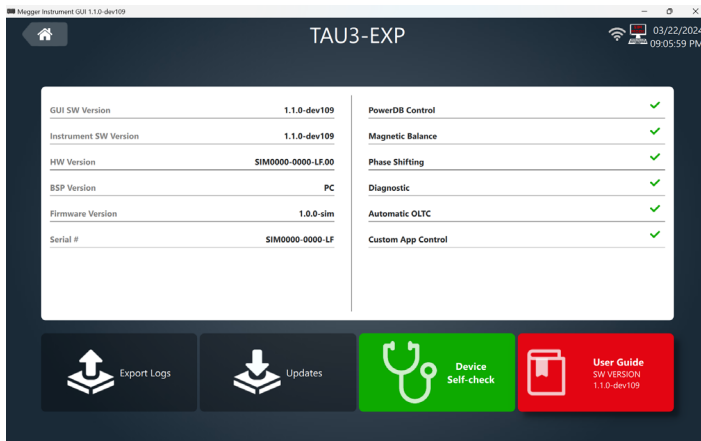


There are six options to select from the Home Screen

- About
- Settings
- Quick Test
- Results
- Asset Template
- Template Test

About

The about screen provides detailed information about the TAU3.



In addition, the following options are available:

- Export Logs
 - Used to provide Megger with detailed information about testing performed
- Updates
 - Used to update the TAU3 to a different software version
- Device Self-check
 - - Used to perform hardware verification of the TAU3
- User Guide
 - - Access the user guide of the TAU3

The settings screen provides options to configure the TAU3 to meet regional and testing needs

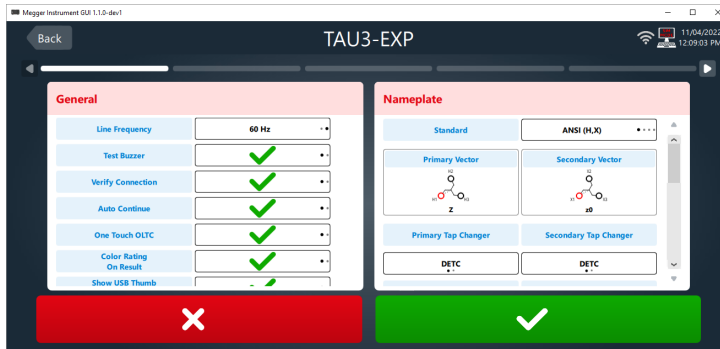


There are five options on the settings screen

- Measurement & Limits
 - Configure nameplate and set limits for output and measurement verification
- Region
 - Configure the TAU3 to the region it is being used
- OLTC Control
 - Configure the tap changer controller for on load tap changers
- Display
 - Adjust brightness of the display
- Administrative & Maintenance
 - Perform lead calibration and restore factory settings

Measurements & Limits Settings

The measurement & limits screen is broken into ten different sections. Swiping left or right or using the left and right arrows navigate to the different setting sections.



General

General settings apply to all tests performed by the TAU3.

- Line Frequency
 - Set to 50 Hz or 60 Hz
- Test Buzzer
 - Enable or disable a countdown before each test
- Verify Connection
 - Enable or disable connection verification before each test. Disable if only one side of the transformer is connected to the TAU3
- Auto Continue
 - When enabled, the TAU3 will boot to the last test performed. When disabled, the TAU3 will boot to the home screen
- One Touch OLTC
 - When enabled, the One Touch OLTC option will be enabled by default when performing Template Tests that have an OLTC
- Color Rating on Results
 - Enable to emphasize measurements that exceed limits
- Show USB Thumb Drive
 - Enable to display a USB Thumb Drive when connected to a PC. Disable to prevent the USB Thumb Drive from displaying
- Output Indicator Brightness
 - Change the output brightness of the warning indicator
- Export Folder
 - Change the default folder where results are exported. This option is only available when controlling the TAU3 from a PC.

Configure the default nameplate used when performing tests

- Standard
 - Choose from ANSI, IEC, Australian, or GOST
 - Primary Vector
 - Choose the default primary vector
 - Secondary Vector
 - Choose the default secondary vector
 - Primary Tap Changer
 - Choose the default primary tap changer. DETC, OLTC, or NA
 - Secondary Tap Changer
 - Choose the default secondary tap changer. DETC, OLTC, or NA
 - Primary Tap Labels
 - Choose the default primary tap labels
 - Secondary Tap Labels
 - Choose the default secondary tap labels
 - Primary # of Taps
 - Choose the default primary number of taps. If associated tap changer set to NA, this will be NA
 - Secondary # of Taps
 - Choose the default secondary number of taps. If associated tap changer set to NA, this will be NA
 - Primary Winding Material
 - Choose the default primary winding material. Copper or Aluminum. Selection will impact temperature correction for winding resistance, short circuit impedance, and efficiency tests
 - Secondary Winding Material
 - Choose the default secondary winding material. Copper or Aluminum. Selection will impact temperature correction for winding resistance, short circuit impedance, and efficiency tests
 - Round Tap Voltages
 - Choose the rounding used for tap calculations. 1 V, 5 V, or 10 V.
 - Winding Temperature
 - Choose the default winding temperature used for temperature correction.
 - Correct winding to temperature
 - Enable or disable. When enabled, winding resistance, short circuit impedance, and efficiency tests will be automatically corrected to the specified temperature.
 - Auto Transformer / VReg Labels
 - Choose the labels for autotransformers. Standard naming convention (ANSI, IEC, Australian, or GOST) or S,L
 - Tap Phase Shift
 - Choose to enable or disable tap phase shifting. Used rarely
- 1P Primary/secondary connections
- Choose which leads to use for 1P transformer. H1-H2/X1-X2 or H1-H0/X1-X0 options available.

Turns Ratio

- - # OLTC Nominals
 - Set the number of OLTC nominal. Used rarely.
- Configure the turns ratio settings used when performing tests
- Max Test Voltage
 - Set maximum induced voltage limit
 - Maximum induced voltage will be limited based on model
 - Mode
 - Set default test mode:
 - AUTO (recommended)
 - 3Ø up
 - 3Ø down
 - 1Ø up
 - 1Ø down
 - 3Ø modes not available in the TAU3-BASIC
 - Ratio Display
 - Select TTR (line to ground) or TNR (line to line)
 - Ratio Error Limit
 - Set the turns ratio evaluation criteria. 0.5% recommended.
 - Phase Deviation Display
 - Set the default phase deviation display. Absolute will show total deviation of the measured phase compared to the excited phase. Relative will show total deviation of the measured phase compared to the excited phase less the expected deviation of the measured phase.
 - Phase Unit
 - Choose from degrees °, minutes ″, or ms
 - Phase Deviation Limit
 - Set the default phase deviation limit. Recommended 0.5°

Magnetic Balance

Configure the magnetic balance settings used when performing tests

- Imbalance Limit
 - Set imbalance limit. Recommended 3.0%
- Show on Quick Test
 - When enabled, magnetic balance will be automatically performed with each turns ratio quick test
- Show on Template test
 - When enabled, magnetic balance will be automatically performed with each turns ratio template test
- Preferred Winding
 - Select which winding to perform magnetic balance. Auto recommended. When enabled, Auto mode will use YN windings for magnetic balance when present. If no YN winding, Auto mode will use the primary winding.

Configure the winding resistance settings used when performing tests

- Max Current
 - Set the maximum current limit. Applies to primary and secondary windings
 - **Maximum current will be limited based on model**
- Stability %
 - Set the stability criteria for winding resistance tests.
- Stability time
 - Set the time the stability % must be maintained to indicate a measurement is stable
- Auto Save
 - When enabled, results will automatically save when stability time and % criteria have been met
 - When performing winding resistance on multiple OLTC taps in template tests, Auto Save will be disabled for the first tap of each phase. After saving the first tap, the test will automatically save for the remaining taps for that phase.
- Max Winding Difference
 - Set the maximum resistance difference evaluation criteria. Recommended 3.0%
- Winding Difference Calculation
 - - ANSI/IEC
 - Diff % = $((R_{max} - R_{min}) / R_{avg}) \times 100$
 - - CEE
 - Determine |Max Phase Error| from
 - $AVG = (Phase\ 1 + Phase\ 2 + Phase\ 3)$
 - Phase 1 Error = Phase 1 - AVG
 - Phase 2 Error = Phase 2 - AVG
 - Phase 3 Error = Phase 3 - AVG
 - Diff % = $(|Max\ Phase\ Error| / AVG) \times 100$
- Dual Winding Excitation
 - When enabled, primary and secondary will be energized and measured simultaneously
- Make Before Break
 - Set current sag (10%) time limit during OLTC transitions. 5 ms recommended.
- Hard Break
 - Set limit for hard break during winding resistance tests.

200 ms recommended. This setting is used to protect the operator in the event of inadvertent lead disconnection during winding resistance tests

Demagnetization

Configure the demagnetization settings used when performing tests

- Phase
 - Select a phase or all phases. Recommended B Phase
- Auto Demag After Resistance
 - When enabled, the TAU3 will automatically demagnetize the transformer after a resistance test has been performed.

Efficiency

Configure the efficiency settings used when performing tests

Not available in the TAU3-BASIC

- No-load mode
 - Choose between fast or full. Fast will double the eddy current losses and Full will use eddy current losses and hysteresis losses.
- Show on Quick Test
 - When enabled, the efficiency test will appear when performing quick tests
- Show on Template Test
 - When enabled, the efficiency test will appear when performing template tests
- Correct to Load %
 - Choose the default load % used for correction of efficiency results

Short Circuit Impedance

Configure the short circuit impedance settings used when performing tests.

Not available in the TAU3-BASIC

- % Error Limit
 - Set the evaluation criteria used for short circuit impedance tests. Recommended 3.0%

Impedance

- - Choose the method of entering nameplate impedance, either in Z % or Z Ω .

Frequency Response Stray Losses

Configure the frequency response stray losses settings used when performing tests

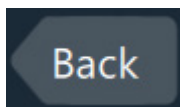
Not available in the TAU3-BASIC

- Frequencies to Test
 - Select the frequencies used for frequency response stray losses tests
- Show on Quick Test
 - When enabled, the frequency stray losses tests will be automatically performed with each short circuit impedance tests.
- Inductance error limit
 - Set the evaluation criteria used for inductance. Recommended 2.5%
- Rs error limit
 - Set the evaluation criteria used for Rs. Recommended 15%

Select cancel to discard changes. Select accept to save changes.



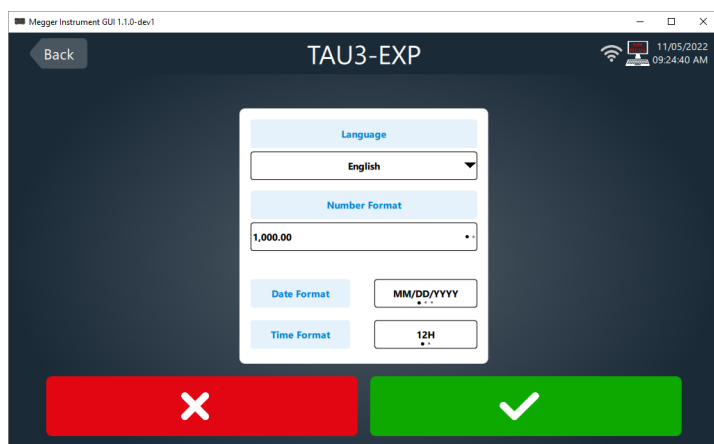
Select back to return to the settings screen.



Select home to return to the home screen.



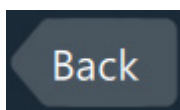
Select the preferred language, number format, date format, and time format for the TAU3. Date and time can be set on the TAU3. When controlled by a PC, the TAU3 will use the PC date and time.



Select cancel to discard changes. Select accept to save changes.



Select back to return to the settings screen.



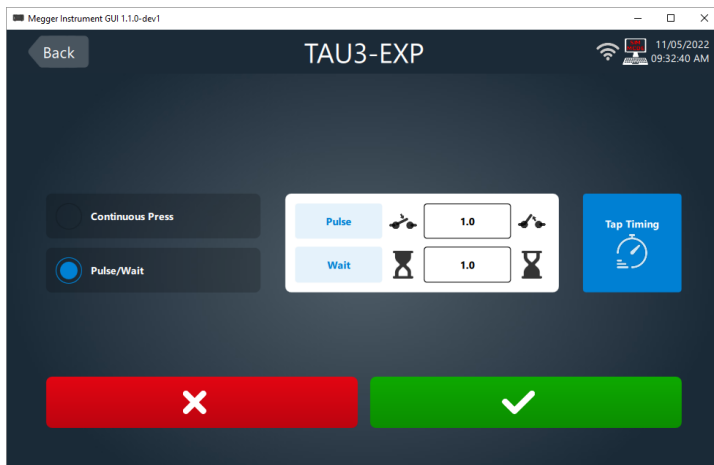
Select home to return to the home screen.



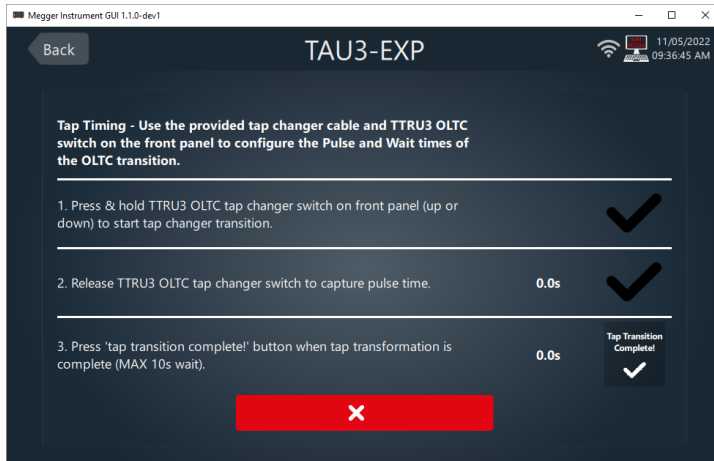
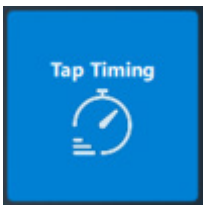
OLTC Control

Select continuous press or pulse/wait operation for the on load tap changer. The majority of transformers use a pulse/wait.

When pulse/wait is selected, options for setting pulse and wait time will be displayed. Pulse is the duration required to initiate a tap change. Wait is the amount of time the tap changer requires to complete the tap changer after initiation.



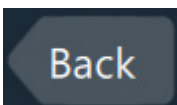
Select tap timing to use the OLTC controls on the TAU3 to set the pulse and wait time.



Select cancel to discard changes. Select accept to save changes.



Select back to return to the settings screen.



Select home to return to the home screen.



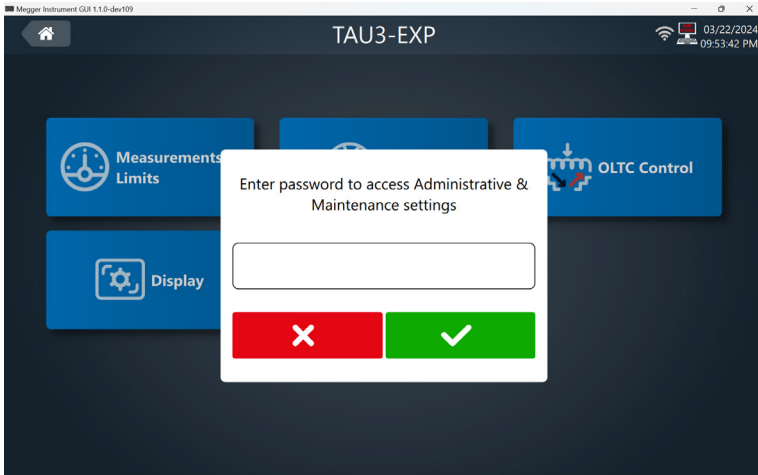
Display

Use the slider to adjust the brightness of the TAU3 display

Administrative & Maintenance

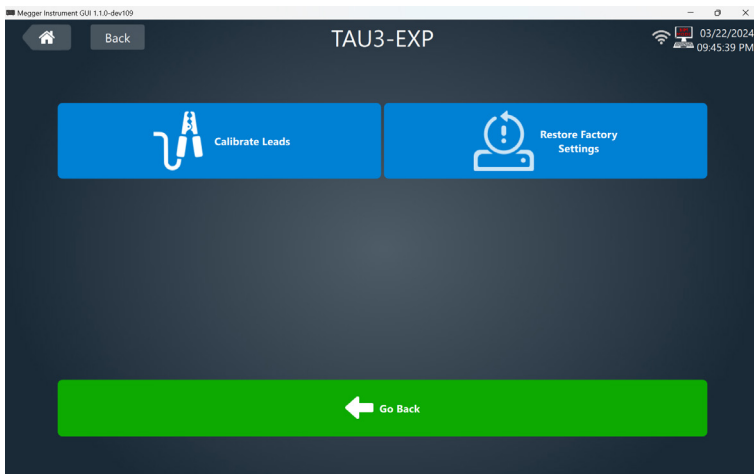
Administrative & Maintenance

After clicking on the Administrative & Maintenance setting, a password dialog box will appear. Enter the password 2621 to proceed.



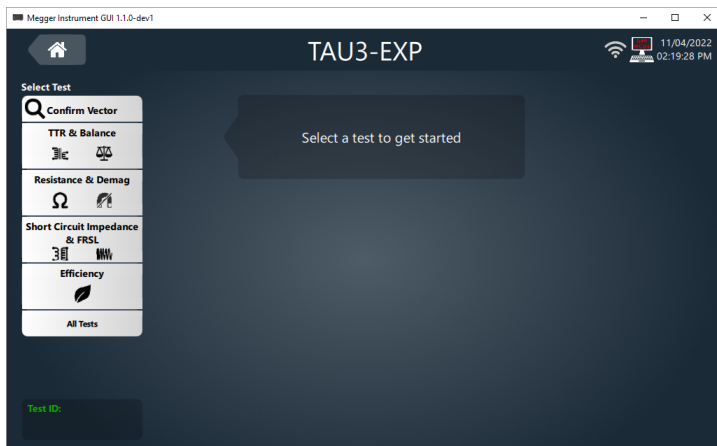
Lead calibration is used for accurate impedance and efficiency test results. A one time lead calibration is typically required when using leads different than the default 9 m (30 ft) calibration. Follow testing best practices when calibrating the leads by fully uncoiling and extending leads.

Restore factory settings is used to reset the TAU3 back to the original settings from the factory. User will be prompted to confirm



Quick Test

After selecting quick test, test options will display on the left hand side of the screen. Enter a Test ID for test identification.



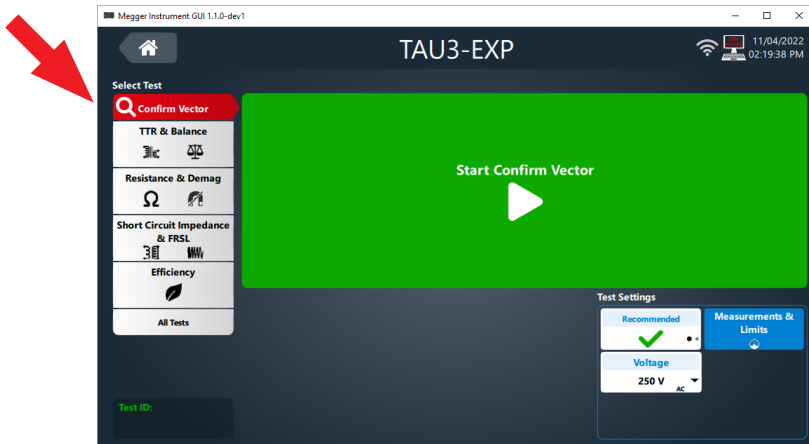
Select home to return to the home screen.



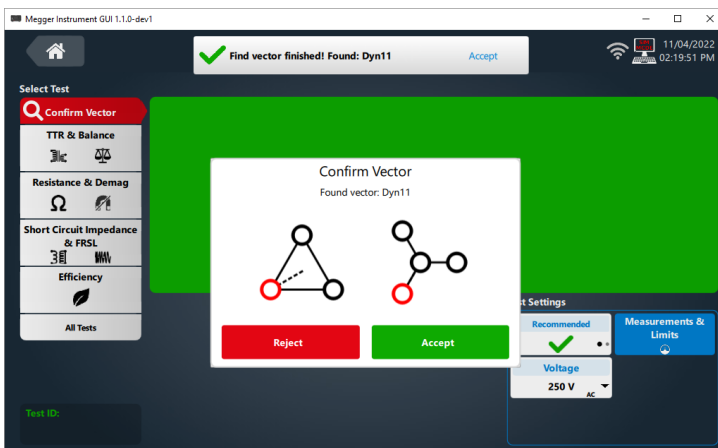
Confirm Vector

Confirm Vector

Confirm vector automatically detect the vector of the connected transformer. Recommend test settings selected by default.



Click Start Confirm Vector to begin the test



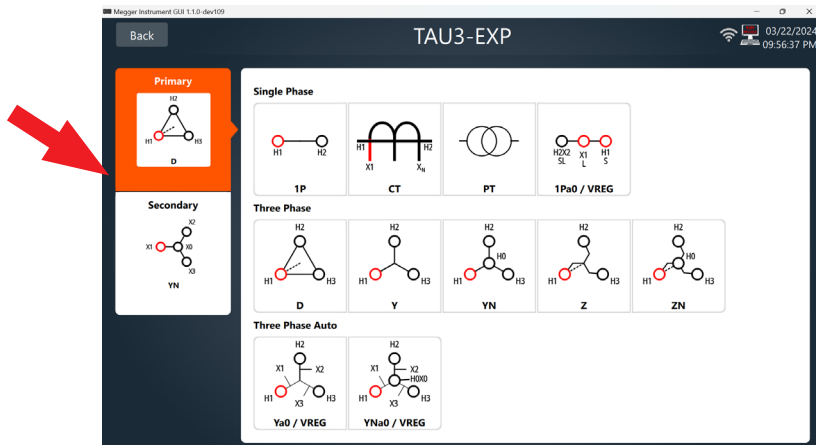
When confirm vector completes, the vector found will be displayed. Verify the vector matches the nameplate of the transformer under test and select Accept. If the vector does not match the nameplate, select Reject.

It is the responsibility of the user to confirm that the vector matches the transformer under test. Megger accepts no responsibility for incorrectly identified vectors.

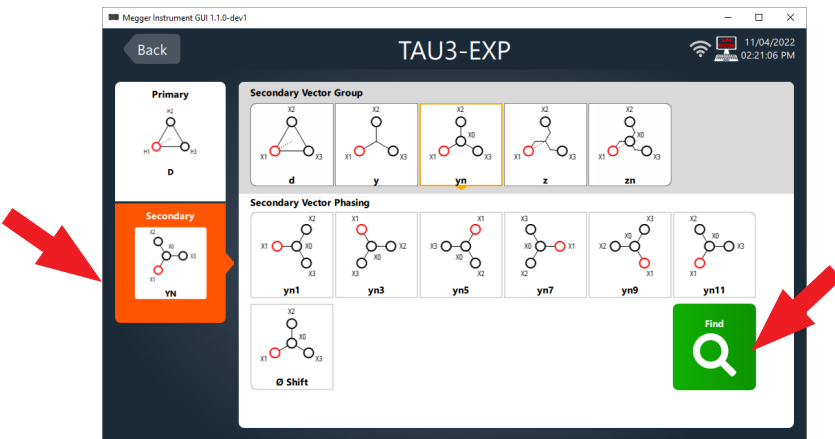
Clicking accept will select the vector found and progress quick test to TTR test setup. Clicking reject will progress to the primary vector selection screen.

Vector, Phases, and Nameplate

Select a primary vector or autotransformer from the Primary vector select screen.

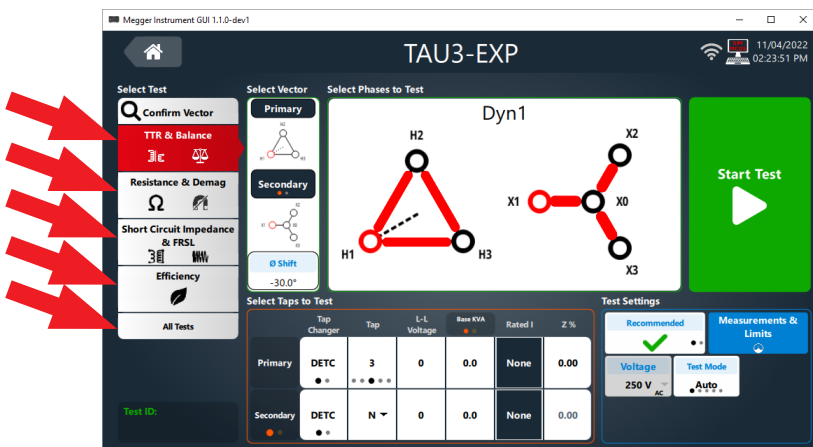


After selecting a primary vector, The secondary vector select screen will display. Select a secondary vector group and phasing. Once selected, the TTR test setup will be displayed. Select find to find the vector phasing for the selected primary and secondary group.



Vector, Phases, and Nameplate

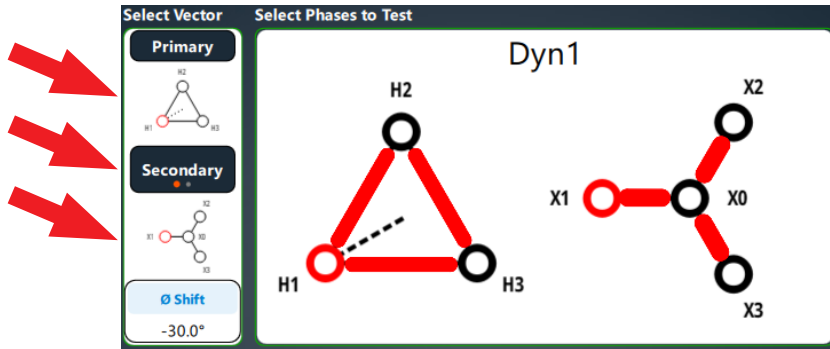
Select TTR & Balance, Resistance & Demag, Short Circuit Impedance & FRSL, Efficiency, or All Tests to display the Select Vector, Select Phases to Test, and Select Taps to Test sections.



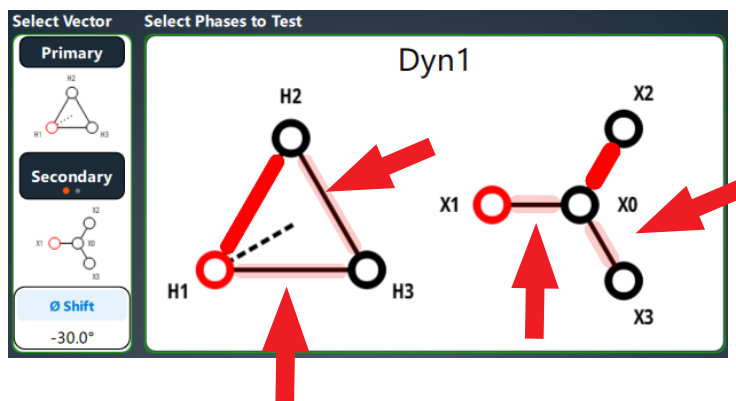
Select Vector and Select Phases to Test

Select Vector and Select Phases to Test

Select Primary to view the primary vector options for the transformer under test. Select Secondary to view the secondary vector options for the primary vector of the transformer under test. Select the Secondary button to change to Tertiary if testing a tertiary winding. Phase shift enables testing of phase shifting transformers. **Phase shifting test capabilities not available on the TAU3-BASIC.**



Individual phases can be enabled or disabled for testing. When testing ratio, impedance, and efficiency, in phase primary and secondary phases are tied together. For example, disabling phase A and C on the primary will disable phase A and C on the secondary.

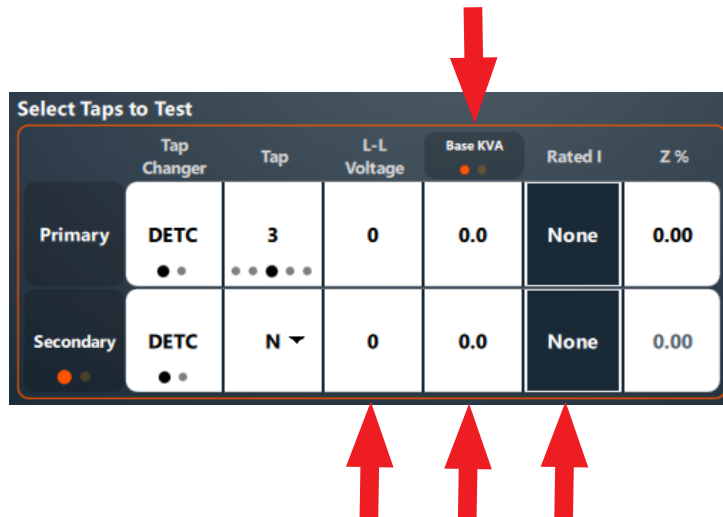


Nameplate

The nameplate section will populate with default settings from Measurement & Limits. Enter tap information for the transformer for evaluation against limits. Secondary can be changed to Tertiary. Base KVA can be changed to Base MVA.

Entering tap voltages for two taps of a winding will automatically calculate tap voltages for the remaining taps of the winding.

Entering L-L voltage and base KVA/MVA will calculate RATED I for the transformer.



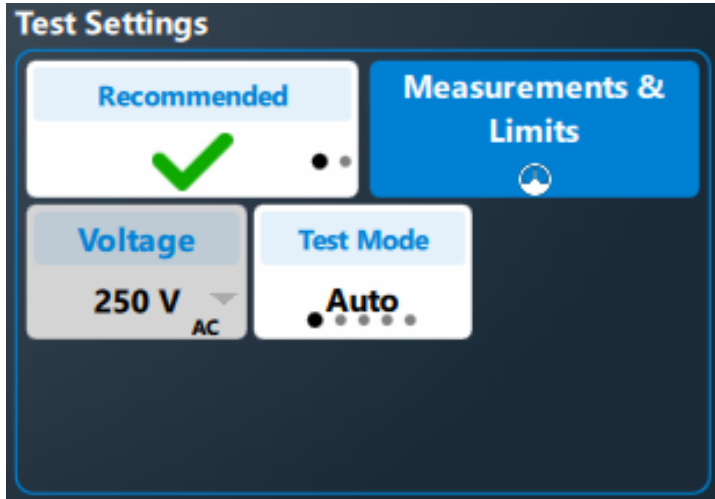
Turns Ratio & Balance

Turns Ratio & Balance

Voltage and Test Mode settings display when Turns Ratio & Balance is selected.

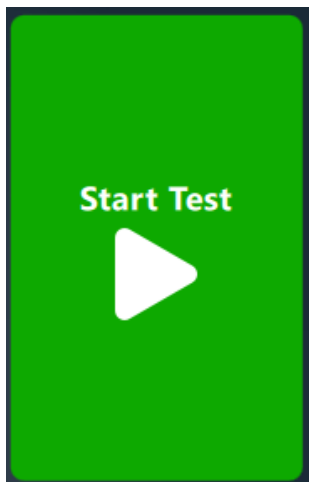
If Magnetic Balance is disabled in settings, only TTR will display in the Select Test section.

Select Measurement & Limits for complete settings options.

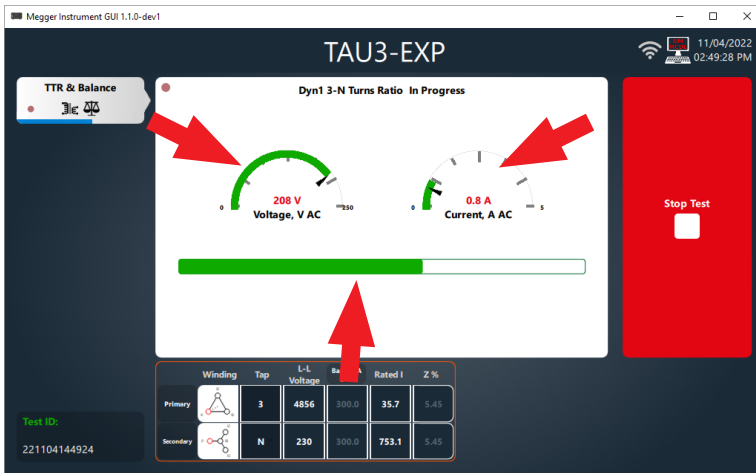


Test Mode Auto will determine the best method for testing the transformer: 3Ø or 1Ø, step up or step down. Changing the test mode will force the TAU3 to test in a specific mode, which can be useful for troubleshooting transformer problems.

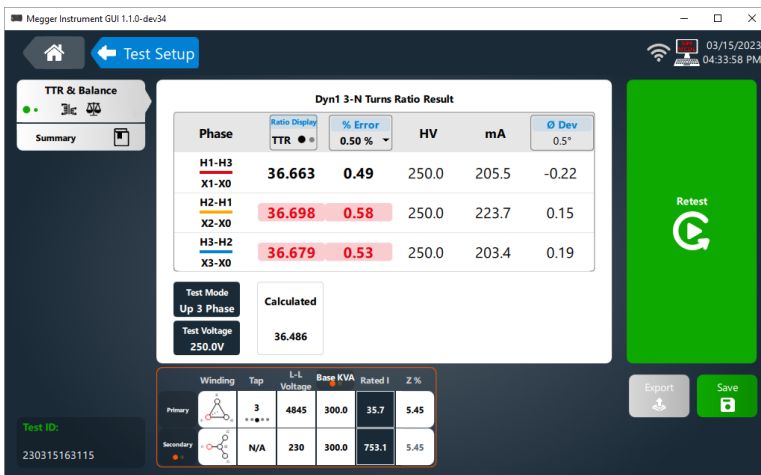
Click Start Test to start the TTR & Balance test.



The TTR & Balance test in progress screen will be shown after starting the test. Test voltage and current are displayed, along with a progress bar.



When the TTR & Balance test is complete, the following screen will display. Phases that exceed limits will be highlighted in red. Nameplate information can be edited if necessary. Ratio display, % Error, and Phase Deviation limits can be adjusted if desired.



Ratio display has two options. Choose the option that is consistent with your testing practices:

- TTR, line to neutral turns ratio
- TNR, line to line turns ratio

Selecting retest will rerun the test.

If the optional 2" printer is connected, the option to print will be displayed. The results will automatically be saved after print is selected.

From the 10" display, connect a USB drive to export results. Selecting export from the PC will export to the folder designated in settings. The result will be automatically saved after exporting.

Click Save to save the result and continue with the next test.

Select TTR & Balance to change to the Balance screen.



Phases that exceed imbalance limits will be highlighted in red. Phases that exceed balance limits can be an indication that the transformer is magnetized.

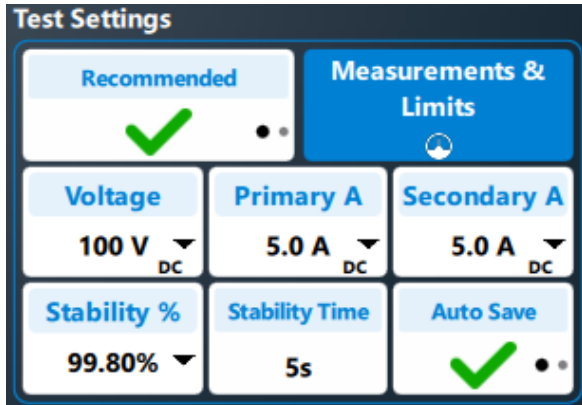
Turns Ratio & Balance



Winding Resistance & Demagnetization

Voltage, Primary Current, Secondary Current, Stability %, Stability Time, and Auto Save settings display when Winding Resistance & Demagnetization is selected.

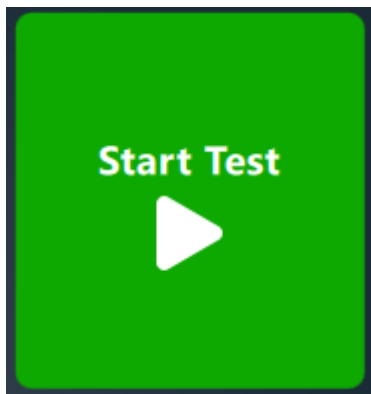
Select Measurement & Limits for complete settings options.



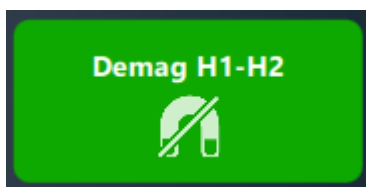
Primary test current is determined by the RATED current of the primary winding. The TAU3 will select 15% of rated current, or the maximum output of the TAU3, whichever is lower. TAU3 BASIC maximum primary current is 10 A. TAU3 ADV, PRO, and EXP maximum primary current is 16 A.

Like primary test current, secondary test current is determined by the RATED current of the secondary winding. The TAU3 will select 15% of rated current, or the maximum output of the TAU3, whichever is lower. TAU3 BASIC maximum secondary current is 10 A. TAU3 ADV maximum secondary current is 16 A. TAU3 PRO and EXP maximum secondary current 32 A.

Click Start Test to start the winding resistance test.



Click Demag to perform demagnetization

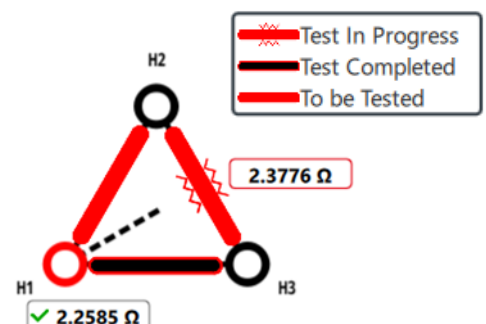


The winding resistance test in progress screen will display after clicking start test.

Phases for windings that have yet to be tested will be displayed in red (H1-H2 below)

Phases that are in progress will show an excitation symbol around the phase (H2-H3 below). Resistance values will be displayed next to phases that are in progress and will continuously update until the resistance measurement is saved.

Phases saved are displayed in black (H1-H3).



Winding Resistance & Demagnetization

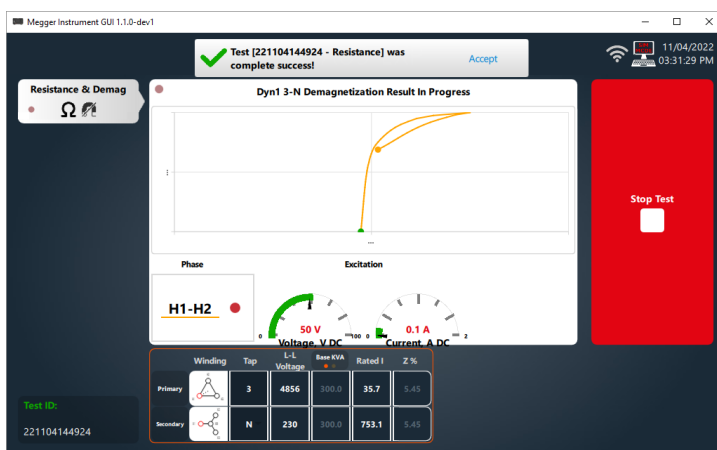
Resistance, current, stability %, and stability time will be displayed for each winding. When the stability % exceeds the set limit, a timer will start. When the timer exceeds the setting for both windings, the Save button will turn green. If Autosave is enabled, the result will automatically save, and the next phase will be tested. If no more phases remain to be tested, the winding resistance test will finish by discharging the transformer. Discharge is indicated by orange/red lights of the output indicator.

Do not disconnect the leads from the transformer or TAU3 during discharge. In the event of power loss during winding resistance tests or discharge, the TAU3 will continue to discharge the transformer passively, indicated by red LEDs on the output indicator. When discharge is complete, the LEDs will turn off, and the leads can be removed.



If Auto Demag after Resistance is enabled, or if Demag is selected from the Resistance & Demagnetization screen is clicked, the Demag in progress screen will be displayed.

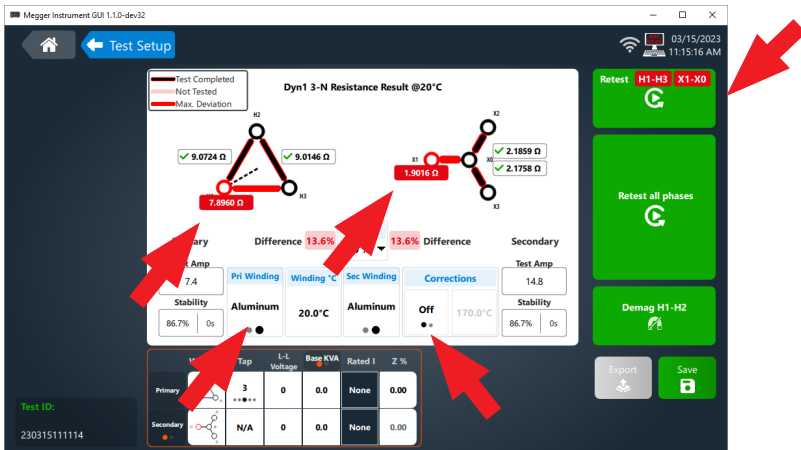
Demag is performed by applying +DC voltage and measuring the time it takes for the transformer core to begin saturation. Polarity is then reversed, and time is measured until saturation occurs in the opposite direction. Based on these initial tests, +DC and -DC voltage is applied in decreasing time intervals until the transformer is demagnetized.



When the winding resistance test is complete, the following screen will be displayed. Phases that exceed limits will be highlighted in red. The software will recommend to retest these individual phases.

Corrections to a set temperature can be enabled or disabled. Ensure that winding temperature and primary and secondary winding material are set correctly for accurate temperature correction.

Winding Resistance & Demagnetization



Selecting Resistance & Demag will display the demagnetization graph



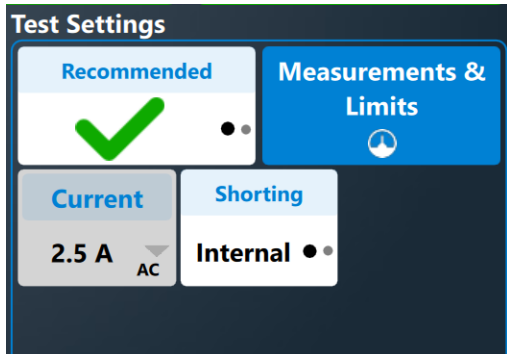
The phase that was demagnetized, along with before and after remanence and demag time will be displayed.



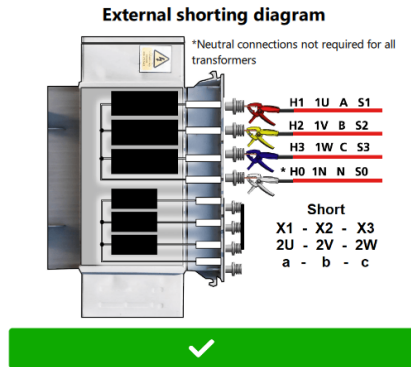
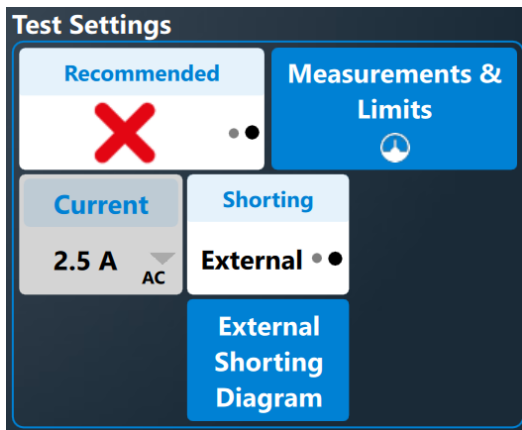
Short Circuit Impedance

Short Circuit Impedance / Leakage Reactance and Frequency Response Stray Losses

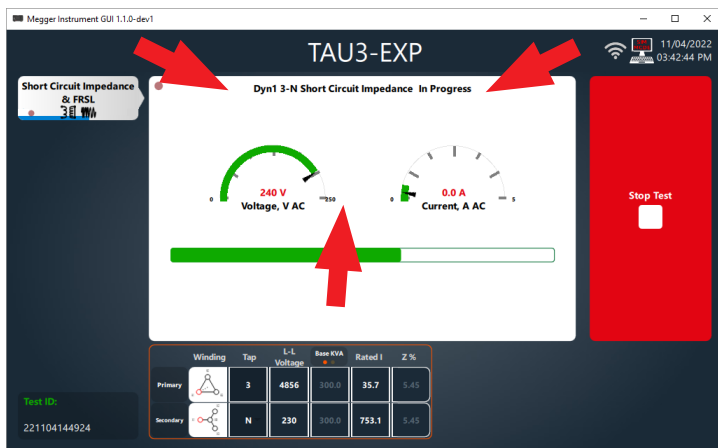
Shorting options will be displayed when Short Circuit Impedance / Leakage Reactance and Frequency Response Stray Losses is selected. Test Current cannot be changed.



When shorting is set to external, an option to display a shorting diagram will be displayed

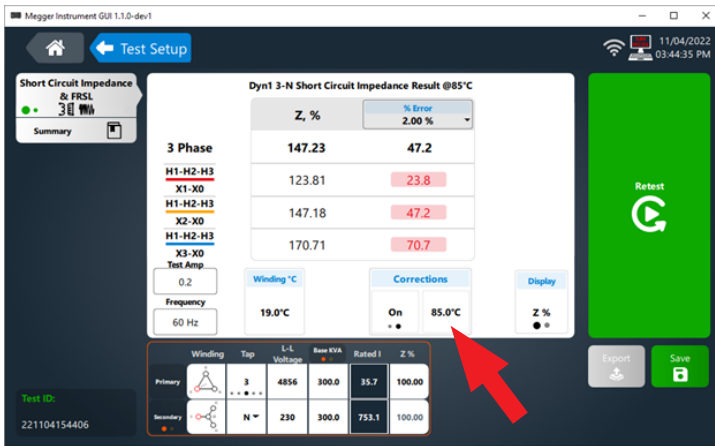


The Short Circuit Impedance & FRSL test in progress screen will be shown after starting the test. Test voltage and current are displayed, along with a progress bar.

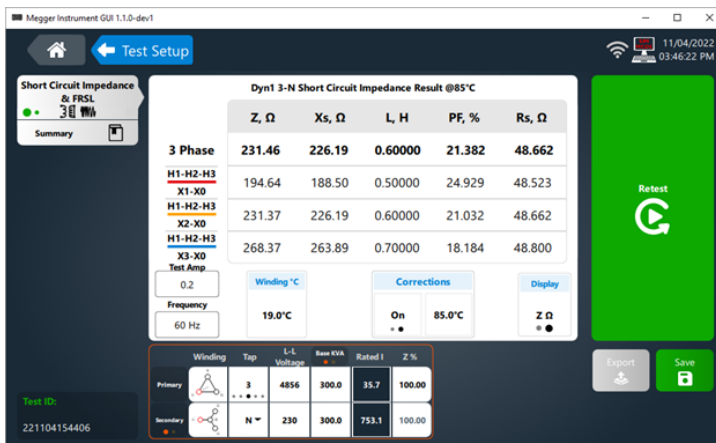
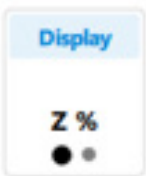


When Short Circuit Impedance & FRSL test is complete, phases that exceed limits will be highlighted in red.

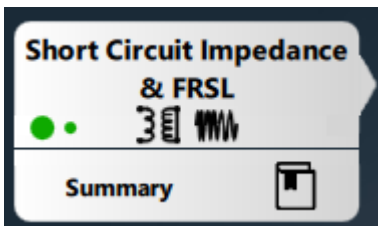
Winding temperature and temperature correction can be adjusted if necessary. Refer to the transformer nameplate to determine the temperature rise of the transformer and add this value to 20°C.



Clicking on Display will show detailed impedance test information.



Clicking on Short Circuit Impedance & FRSL will change to FRSL display



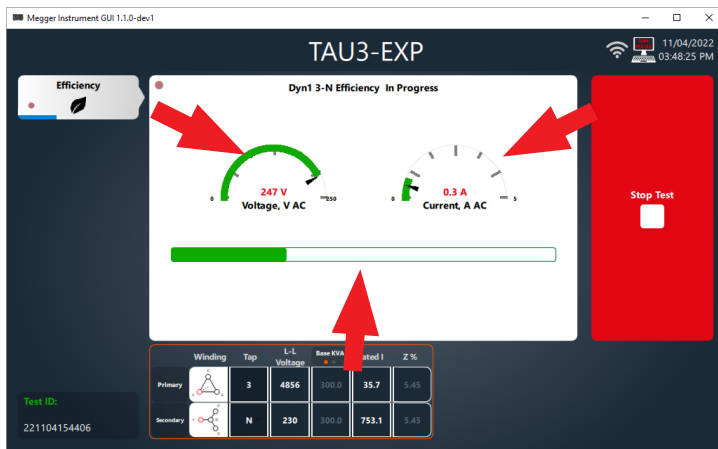
Inductance or Rs limits that exceed limits will be highlighted in red.



Efficiency

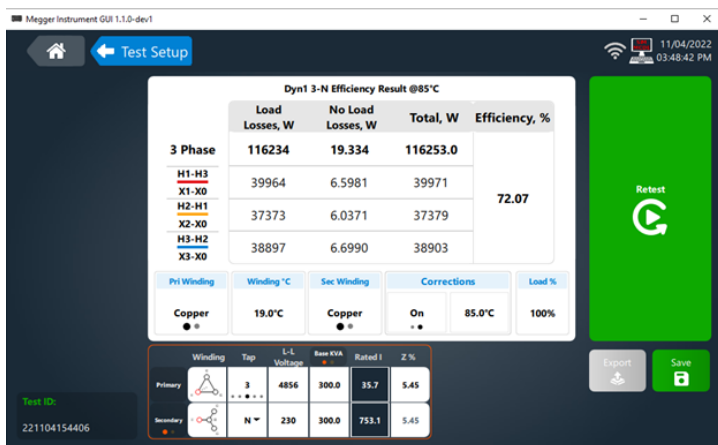
Efficiency

No settings are available for efficiency tests. Click Start Test to begin efficiency tests. The efficiency test in progress screen will be shown after starting the test. Test voltage and current will be displayed, along with a progress bar.



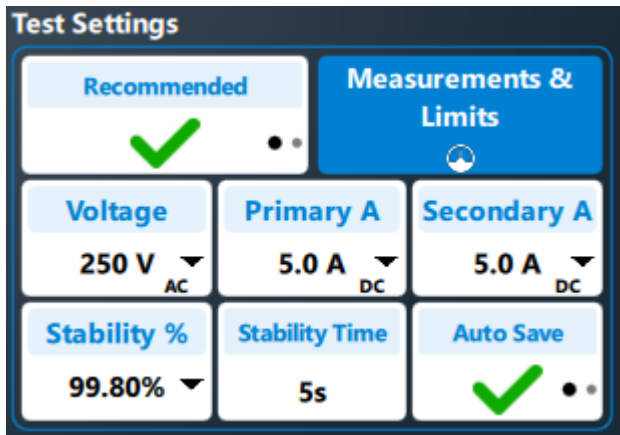
When the efficiency test completes, the following screen will be displayed.

Primary winding material, secondary winding material, winding temperature, and correction to winding temperature and load % can be adjusted.



All Tests

When selecting all tests, the following options will display.
 Select Measurement & Limits for complete settings options.



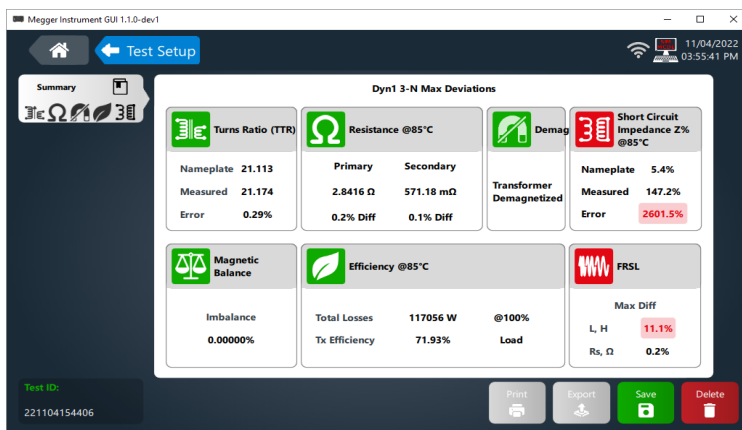
Depending on the TAU3 model, software features enabled, and tests enabled in settings , clicking start test will progress through tests in the following order:

- Turns Ratio
- Magnetic Balance
- Winding Resistance
- Demagnetization
- Short Circuit Impedance
- Frequency Response Stray Losses
- Efficiency

When testing is complete, a report card for the completed tests will be displayed.

Tests that exceed limits will be highlighted in red if color coded results are enabled..

Clicking on a test card will take the software to the phase by phase results for the test selected.



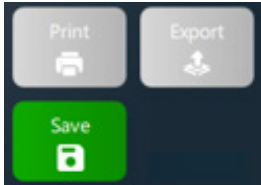
Save, Print, Export, Retest, Home, Test Setup

Save, Print, Export, Retest, Home, Quick Test Setup

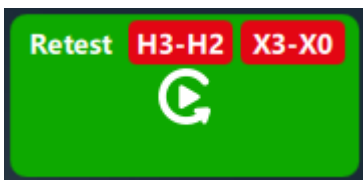
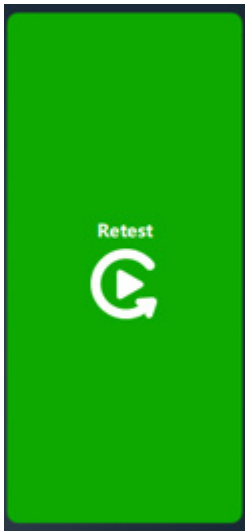
Quick test results are automatically saved at the end of the test. If the namplate or test results settings are changed, a save button will appear. Click save to update the results with the new setting and return to the test setup screen.

Print will print to the optional 2" printer. Print will only display when the printer is detected

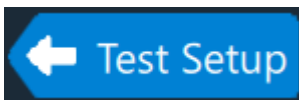
Export will export results to a USB thumb drive. Export will only display when a thumb drive is detected, or when operating the TAU3 from a USB connected PC.



After completing a test, an option to retest will be displayed.



Select test setup to return to the quick test setup screen.



Select home to return to the home screen.



Results

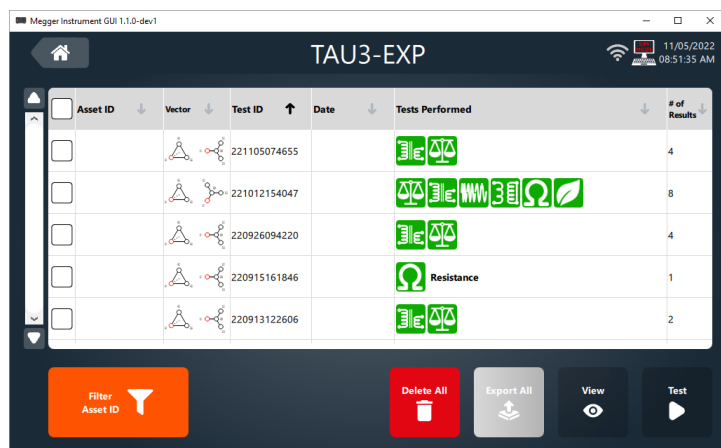
After saving, results will be available for review in the results screen. Results can be sorted by asset ID, vector, test ID, Date, tests performed, and # of results. In addition, results can be filtered by Asset ID.

Tests Performed will show icons for the tests saved for the test ID. TTR, Magnetic Balance, Resistance, Short Circuit Impedance, and Frequency Response Stray Losses icons in green indicate results that are within limits. A demag symbol in green indicates a successful demagnetization of the transformer. Icons in red indicate results that are not within limits.

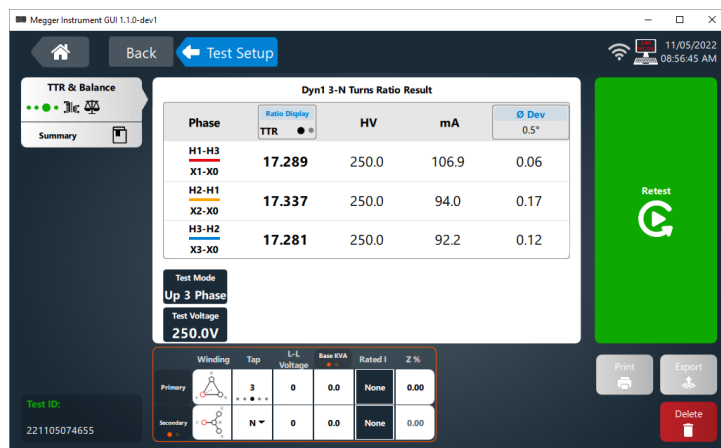
Select a result to view the test information. Selecting a check box will enable delete, export, and test options

Select multiple check boxes to delete or export multiple results

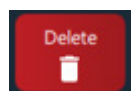
Select the check box in the table header row to select all results.



After selecting a result, the test information will be displayed.



Select delete to delete the results. Confirmation is required to delete the result



Results



Delete result?

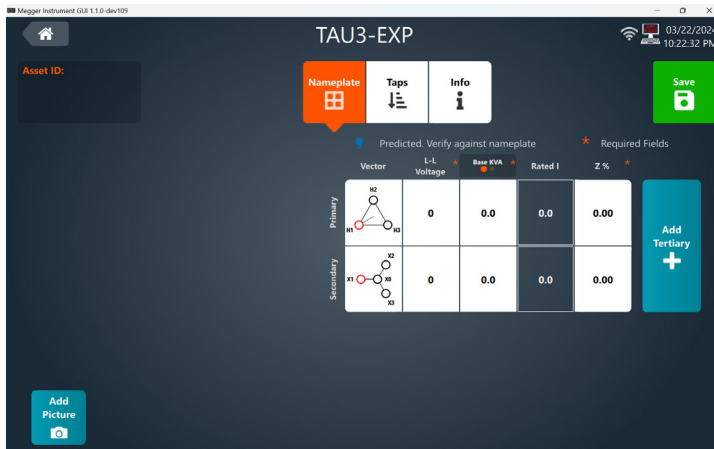
Delete selected results in **221105074655** at taps: 3 - N?



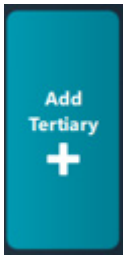
Asset Template

Enter an Asset ID for identification of the asset.

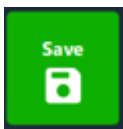
Select Primary and Secondary vector and enter line to line voltage, KVA/MVA, and Z % for the transformer.



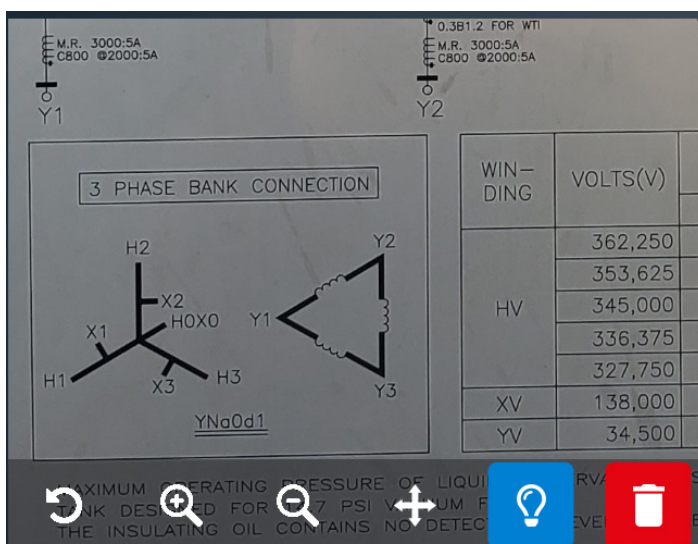
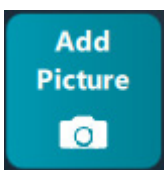
Select add tertiary if the transformer has a tertiary winding.



Select save to save the asset template



Select add picture to add pictures to the asset template.



Asset Template

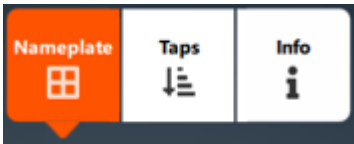
Use the rotate, zoom in, and zoom out buttons to view picture details. Click and hold to move the picture around. Pinch to zoom and swipe to view picture details on the TAU3 display.



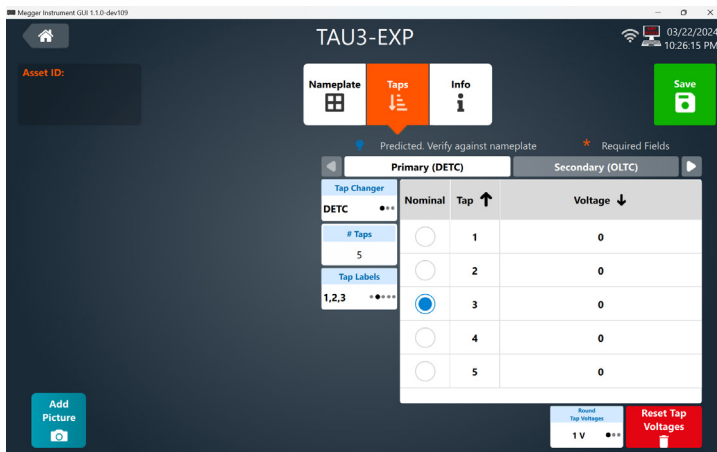
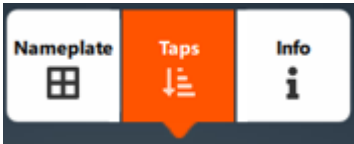
Delete will remove the picture from the asset template



When asset template is first selected, nameplate entry will be selected.



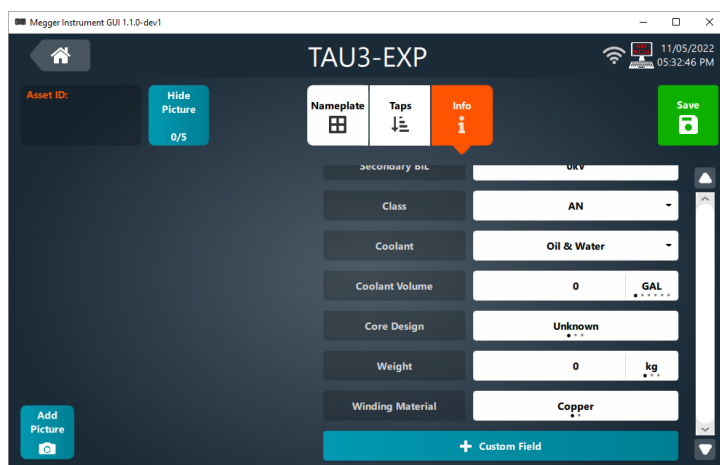
Select taps to configure the tap changers for the primary and secondary winding. Winding options will be prepopulated based on measurement & limits settings.



After entering two tap voltages, the remaining tap voltages will automatically calculate. Override tap voltages as required. Select reset tap voltages to clear tap voltages.

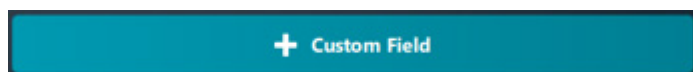


Select Info to enter additional common nameplate information.



- Manufacturer
- Serial Number
- Year
- Substation
- Position
- Tank Type
- Primary BIL
- Secondary BIL
- Class
- Coolant
- Core Design
- Weight
- Primary winding material
- Secondary winding material

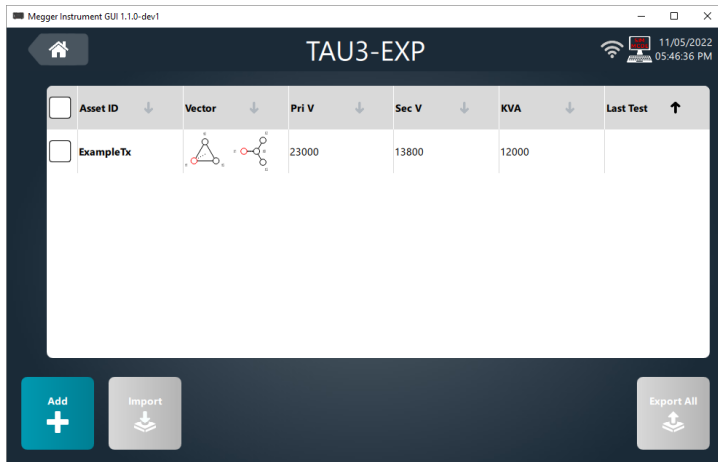
Select add custom field to enter custom nameplate information.



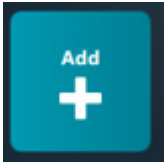
Template Test

Template Test

Asset templates can be sorted by Asset ID, vector, primary voltage, secondary voltage, KVA, and last test date and time. Select an Asset ID to proceed to the template test screen.



Select add to create a new asset template



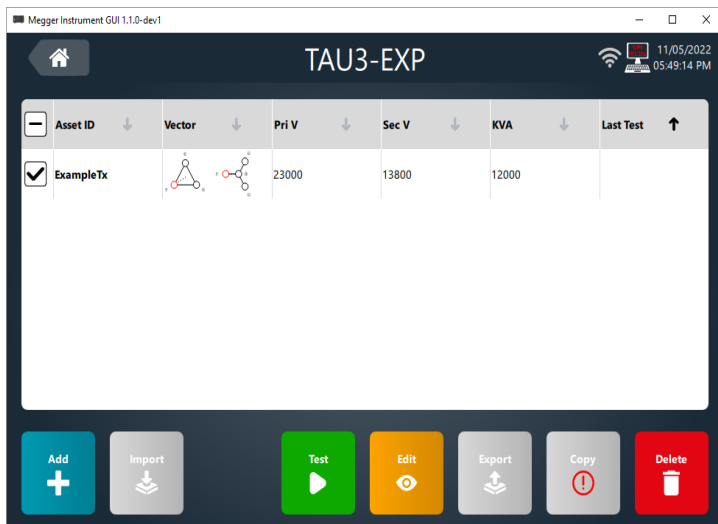
Select export all to export all asset templates



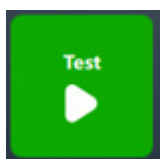
Select import to import exported asset ids.



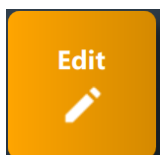
Select the check mark next to an asset id to show additional options.



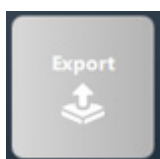
Select test to go to the template test screen



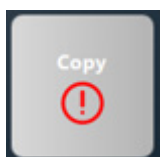
Select edit to edit the asset template



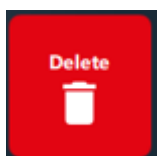
Select export to export the asset template



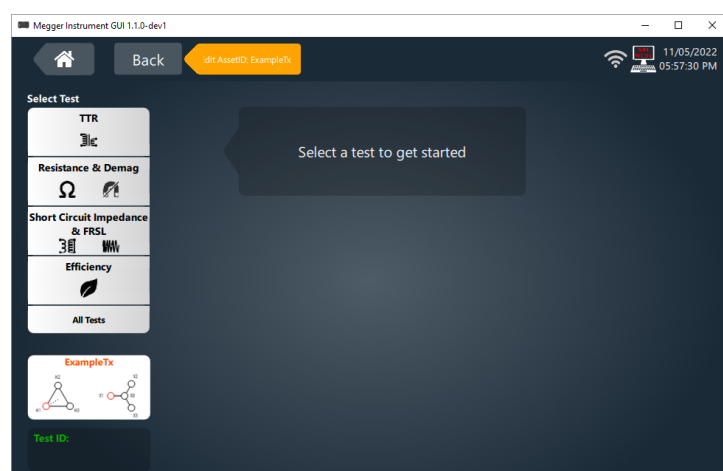
Select copy to copy the asset template



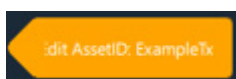
Select delete to delete the asset template



The template test screen is similar to quick test. Select a test to get started.

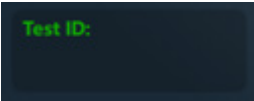


Select edit to edit the asset template.

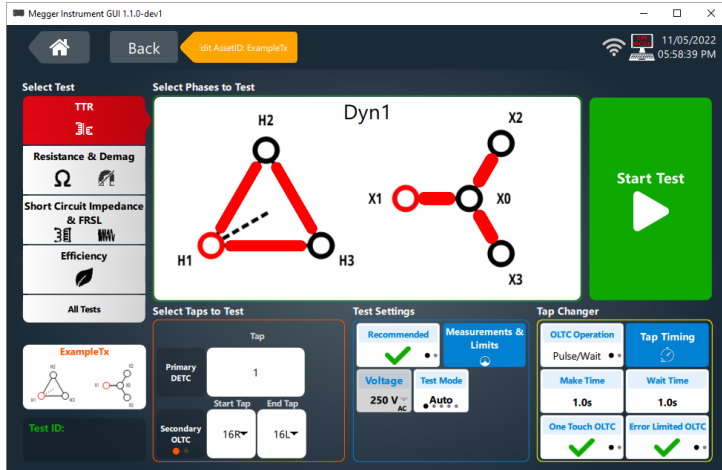


Enter a Test ID for the asset template test. Useful for grouping asset test results for specific testing activities or for tests performed on different days.

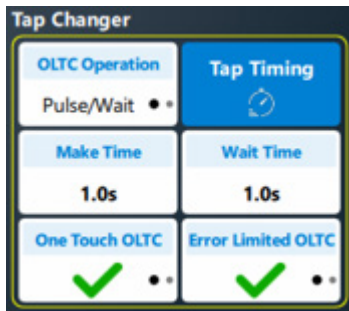
Template Test



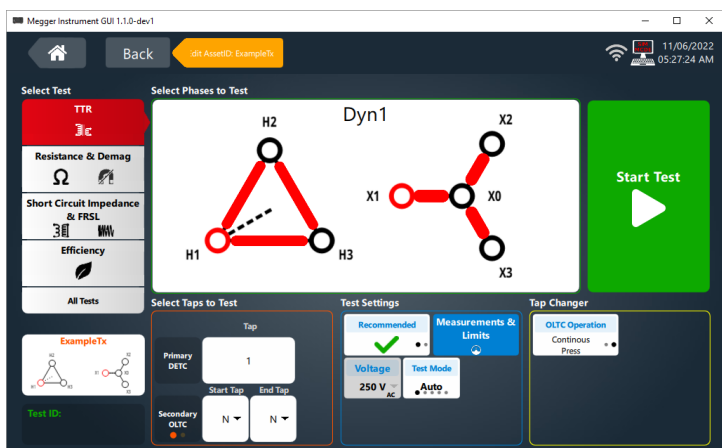
After selecting a test, taps to test and test settings will display. Tap selections available based on asset template configuration. Specific test settings will be displayed based on the test selected, same as quick test.



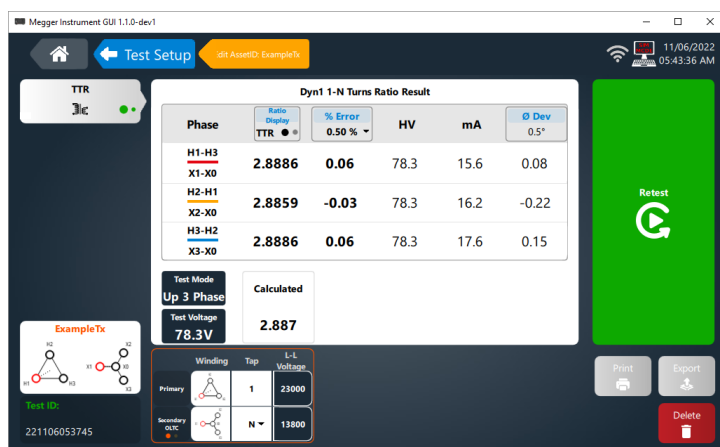
If the asset has an OLTC, there will be options for configuring OLTC control



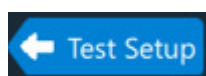
Single Tap Test



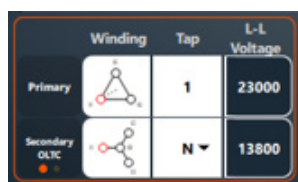
If the asset does not have an OLTC, or the start and end tap for the OLTC are the same, testing will be complete as described in quick test.



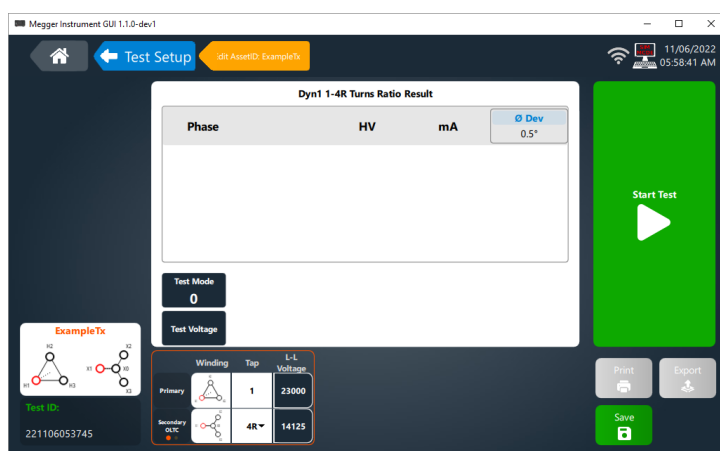
When testing is complete, the Test Setup button can be used to return to the Template Test setup screen.



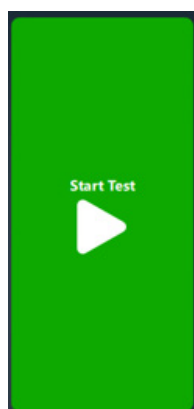
In addition, the tap can be changed in the nameplate section to test other tap positions.



Below is an example when the tap is changed and no results are available.



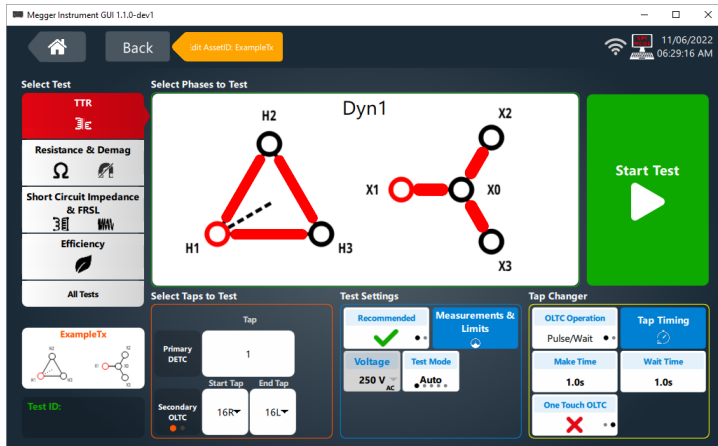
Click Start Test



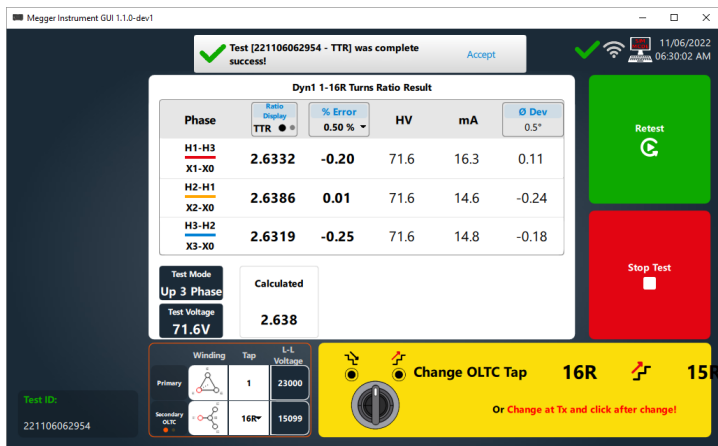
Multiple Tap OLTC AC Tests

Multiple Tap OLTC AC Tests - TTR, Magnetic Balance, Short Circuit Impedance, FRSL, and Efficiency

The start tap and end tap of an OLTC can be changed to test multiple tap positions.



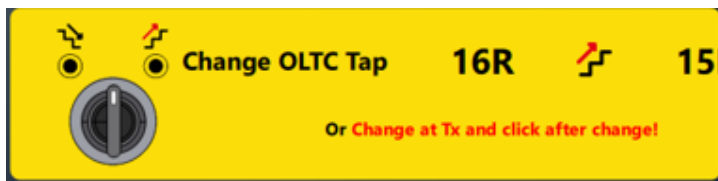
The screen below is displayed after a test is complete when testing TTR & Balance, Short Circuit Impedance & FRSL, or Efficiency.



If the TAU3 tap changer cable is connected to the TAU3 and to the transformer OLTC control, the TAU3 OLTC switch can be used to change the tap changer position. If set to Continuous Press, the next test will begin when the TAU3 OLTC switch is released. If set to pulse/wait, the next test will begin when the pulse/wait timing is complete.

Note: If the tap changer is operated in the opposite direction as indicated in the software, testing will continue in the new direction selected.

If the TAU3 OLTC is not used, the OLTC must be changed manually at the transformer. When the tap change is complete, click the yellow button to begin the next test.

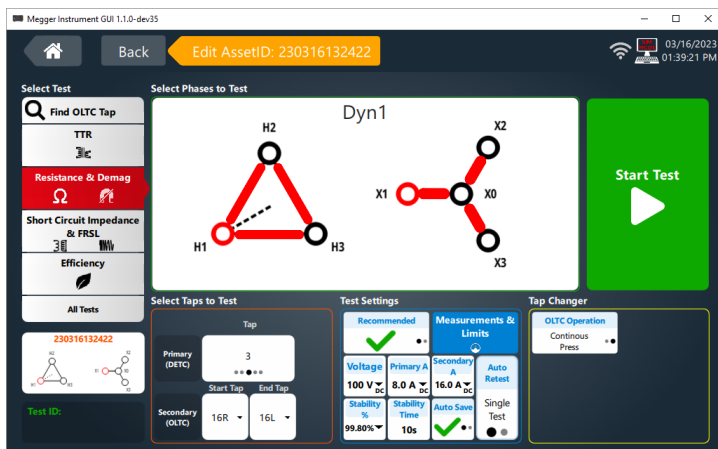
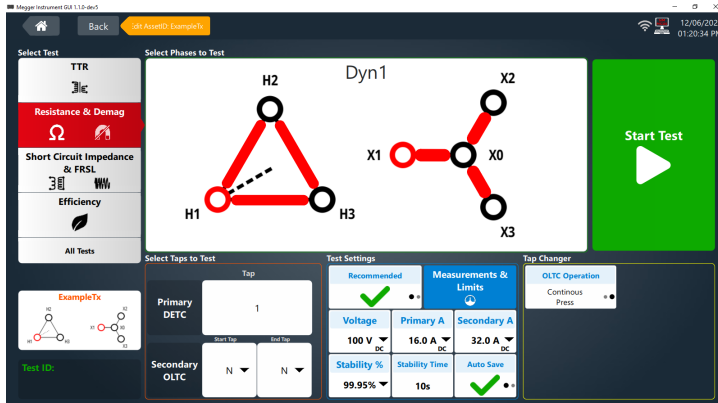


Testing will complete when the last tap is tested.

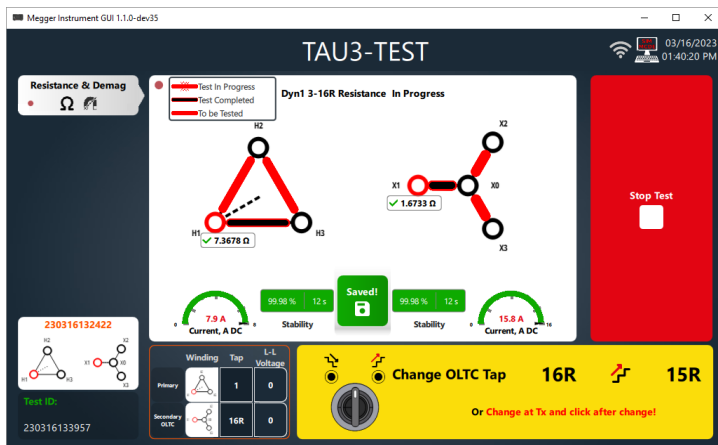
Multiple Tap OLTC Winding Resistance Tests

Multiple Tap OLTC Winding Resistance Tests

The start tap and end tap of an OLTC can be changed to test multiple tap positions.



The screen below is displayed after the first phase and tap are complete when testing winding resistance.

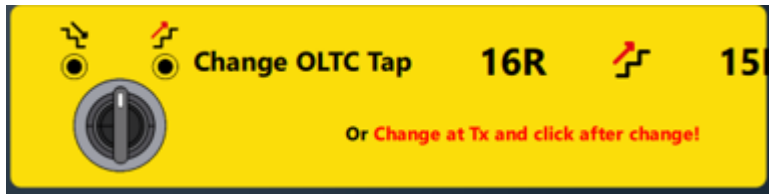


If the TAU3 tap changer cable is connected to the TAU3 and to the transformer OLTC control, the TAU3 OLTC switch can be used to change the tap changer position. If set to Continuous Press, the next test will begin when the TAU3 OLTC switch is released. If set to pulse/wait, the next test will begin when the pulse/wait timing is complete.

Note: If the tap changer is operated in the opposite direction as indicated in the software, testing will continue in the new direction selected.

If the TAU3 OLTC is not used, the OLTC must be changed manually at the transformer. When the tap change is complete, click the yellow button to begin the next test.

Multiple Tap OLTC Winding Resistance Tests

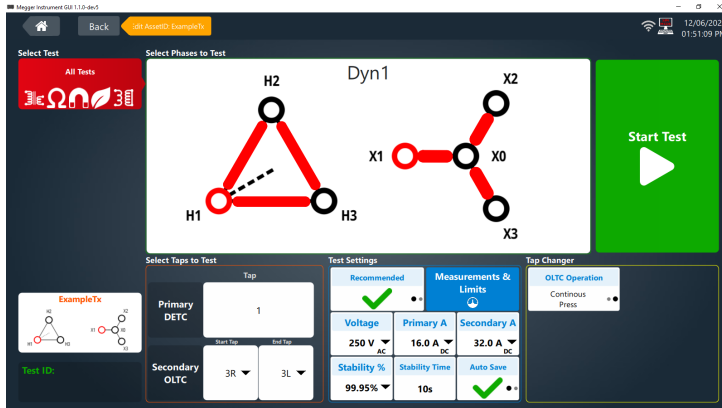


When the last tap of the first phase is completed, the test set will automatically discharge and energize the next phase to be tested.

Testing will complete when the last tap of the final phase has been saved.

Multiple Tap OLTC All Tests

The start tap and end tap of an OLTC can be changed to test multiple tap positions.



When performing All Tests, the procedure is as follows.

1. Preliminary Demagnetization.
 - Used to ensure accuracy of AC tests. Can be canceled.
2. Tap Changer Verification.
 - When Auto OLTC is selected, the TAU3 will automatically confirm proper connection to the tap changer by performing a series of TTR tests and tap changes. Can be canceled.
3. TR & Balance*, Short Circuit Impedance & FRSL*, and Efficiency* will be tested on each tap from start tap to end tap
4. Winding resistance
 - a. Phase A end tap to start tap
 - b. Phase B start tap to end tap
 - c. Phase C end tap to start tap
5. Demagnetization

*Balance, FRSL, and efficiency will only be tested if purchased and enabled.

PowerDB Import

PowerDB Import

The combined 3Ø form can be used to import TAU3 data into PowerDB.

PowerDB Control

The combined 3Ø form can be used to configure and run tests with the TAU3.

Service

If immediate assistance is required, please contact the customer service by telephone or email:

+1 670 676 8500

vfcustomersupport@megger.com

Troubleshooting

The Troubleshooting Guide is designed to evaluate the reasons for a TAU3 malfunction. The possible test set malfunctions and causes are listed below. Electronic circuit repairs should not be attempted in the field. Refer to Repair section.

TTRU3 does not turn on

- Check that the power cord is fully inserted into the TTRU3.
- Check that the power source is outputting voltage at acceptable levels and frequency.
- Check that the power cord is fully inserted into the source.
- Check that the power switch is in the correct position (I).
- Set the power switch to off (O)
 - Wait 30 seconds
 - Set the power switch to on (I)
- Try another power cord

Lead check

- Connect the leads as described below
 - H1 to X1
 - H2 to X2
 - H3 to X3
 - H0 to X0
- Select Dd0, Yy0, or YNyn0 and perform a test
- Verify ratio between 1.0005 and 0.9995

TTRU3 Reports test failed, but still provides data

- Check lead connections. Reference Nameplate to ensure leads are connected to the correct bushing.

Printer not working

- Check battery is inserted into printer
- Charge printer battery using supplied charger
- Check printer paper is inserted properly
- Check USB cable is plugged into printer
- Check USB cable is plugged into TTRU3 USB port
- Check printer is turned on by holding power button
- Try other USB ports

Maintenance

OLTC moving in wrong direction

- Check the OLTC wiring diagram and ensure leads are connected to correct terminals.

Cannot connect TTRU3 to PC

Contact your IT department for primary assistance when connecting any device to your PC.

- Check USB cable is fully inserted into the TTRU3
- Check USB cable is fully inserted into PC
- Check the TTRU3 is powered on
- Check TTRU3 SW is installed
- Check TTRU3 is running
- Move USB cable to another USB port on your PC
- Try another USB Cable
- Try another PC

Maintenance

Only qualified persons familiar with the hazards involved with high-voltage test equipment should perform maintenance. Read and understand Sections 1, 2, 3, 4, and 5 before performing any service.

The TTRU3 requires only periodic inspection. Inspect all hardware items to ensure all are in good condition.

The TTRU3 may be cleaned periodically. In so doing, do not allow water to penetrate panel holes. An all-purpose, household spray cleaner can be used to clean the panel. Polish with a soft, dry cloth. Clean the cables and mating panel receptacles with isopropyl or denatured alcohol applied with a clean cloth.

Calibration

A complete performance and calibration check should be made at least once every year. This will ensure that the TTRU3 is functioning properly over the entire measurement range. The TTRU3 calibration is performed on each new or repaired unit before sending it to a customer.

Repairs

Any service or repair of this equipment should be performed only by qualified persons who are aware of electrical hazards and the necessary precautions required to prevent injury.

Megger offers a complete Repair and Calibration Service and recommends that its customers take advantage of this service for routine maintenance or in the event of any equipment malfunction.

In the event Service is required, contact your Megger representative for a product Return Authorization (RA) number and shipping instructions.

Ship the product prepaid and insured and marked for the attention of the Megger Repair Department. Please indicate all pertinent information, including catalog number, serial number, and problem symptoms.

Manufacturing sites

Megger Limited
Archcliffe Road
Dover
Kent
CT17 9EN
ENGLAND
T. +44 (0)1 304 502101
F. +44 (0)1 304 207342

Megger GmbH
Weststraße 59
52074
Aachen
Germany
T. +49 (0) 241 91380 500
E. info@megger.de

Megger Valley Forge
400 Opportunity Way
Phoenixville
PPA 19460
USA
T. 1-610 676 8500
F. 1-610-676-8610

Megger USA - Dallas
4545 West Davis Street
Dallas
75211-3422
T. +1 214 333 3201
F. +1 214 331 7399
USSales@megger.com

Megger AB
Rinkebyvägen 19, Box 724,
SE-182 17
DANDERYD
T. 08 510 195 00
E. seinfo@megger.com

Megger USA - Fort Collins
4812 McMurry Avenue
Suite 100
Fort Collins CO 80525
USA
T. +1 970-282-1200

The company reserves the right to change the specification or design without prior notice.

Megger is a registered trademark

The Bluetooth[®] word mark and logos are registered trademarks owned by Bluetooth SIG, Inc and is used under licence.

Part No: TAU3_UG_en_V01g